

RECREATION &

# TRAIL GUIDE

TO THE ROYAL  
GORGE REGION,  
COLORADO

MAPS  
& TIPS



FREMONT ADVENTURE RECREATION

Issue 7 | 2026

# TABLE OF CONTENTS

## BIKING, HIKING, & RUNNING

|                                   |    |
|-----------------------------------|----|
| TRAIL ETIQUETTE .....             | 9  |
| ROYAL GORGE PARK .....            | 10 |
| TUNNEL DRIVE / ROYAL CASCADE..... | 12 |
| TEMPLE CANYON PARK.....           | 14 |
| HOGBACKS OPEN SPACE.....          | 16 |
| SOUTH CAÑON TRAILS.....           | 18 |
| SMOOTH CRIMINAL FLOW TRAIL.....   | 20 |
| THE YARD SKILLS PARK.....         | 21 |
| THE YARD MTB SKILLS PARK.....     | 21 |
| RIVERWALK BIKE PARK.....          | 21 |
| ARKANSAS RIVERWALK TRAIL.....     | 22 |
| OIL WELL FLATS.....               | 24 |
| RED CANYON PARK.....              | 26 |
| NEWLIN CREEK / FLORENCE MTN. PARK | 28 |
| PHANTOM CANYON / SHELF ROAD.....  | 30 |
| RED CANYON ROAD RIDE.....         | 32 |
| TEMPLE CANYON ROAD CROSS-RIDE     | 34 |
| HARDSCRABBLE LOOP.....            | 36 |

## ROCK CLIMBING

|                                   |           |
|-----------------------------------|-----------|
| SHELF ROAD.....                   | 39        |
| NORTH CAÑON CLIMBING.....         | 39        |
| SOUTH CAÑON CLIMBING.....         | 40        |
| VOYAGER.....                      | 40        |
| <b>tanner dome crags.....</b>     | <b>41</b> |
| NEWLIN CREEK (see map on page 29) | 41        |

## BOATING & FISHING

|                                    |    |
|------------------------------------|----|
| RIVER ETIQUETTE AND SAFETY.....    | 43 |
| PINNACLE ROCK TO CENTENNIAL PARK   | 44 |
| CENTENNIAL PARK TO SELLS' AVE..... | 46 |
| RIVER PLAY WAVES.....              | 47 |
| SWIMMING IN THE RIVER.....         | 48 |
| SELLS AVE. TO MACKENZIE TAKEOUT    | 49 |

|                         |    |
|-------------------------|----|
| CAÑON CITY PARKS.....   | 50 |
| CAMPING.....            | 52 |
| CAMPING GUIDELINES..... | 52 |

## FAMILY FUN & ACTIVITIES

|                           |    |
|---------------------------|----|
| FAMILY ITINERARIES.....   | 55 |
| FOSSIL DISCOVERY.....     | 56 |
| TOP KID HIKES.....        | 58 |
| TOP KID BIKE RIDES.....   | 59 |
| WHICH TRAIL TO TAKE?..... | 61 |
| SAFETY FIRST.....         | 62 |
| TRAIL STEWARDSHIP.....    | 63 |
| REGIONAL GEOLOGY.....     | 64 |
| TYPES OF ROCKS.....       | 64 |
| GEOLOGIC TIME.....        | 65 |
| DOWNTOWN FLORENCE.....    | 66 |
| DOWNTOWN CAÑON CITY.....  | 68 |

|                      |    |
|----------------------|----|
| LOCAL RESOURCES..... | 80 |
|----------------------|----|



The FAR Adventure Guide is funded in part by a generous matching grant provided by Cañon City's Community Agency Funding, Fremont County Tourism Council and the Colorado Tourism Office.

THIS ACTIVITY IS SUPPORTED BY FUNDING FROM THE COLORADO TOURISM OFFICE, A STATE AGENCY.

Copyright © 2026 Fremont Adventure Recreation, Issue 7  
ALL RIGHTS RESERVED. No part of this booklet may be reproduced or transmitted in any form by any means, electronic or mechanical, including photocopying and recording, or by any information storage and retrieval system, except as may be expressly permitted by the 1976 Copyright Act or in writing from the publisher. Requests for permission should be addressed to Fremont Adventure Recreation, 455 Greenhorn Dr., Cañon City, CO 81212.

**Maps:** Brian LeDoux and Ashlee Sack  
**Design and layout:** Ashlee Sack  
**Printing:** Publication Printers, Denver

**Cover photo:** Ashlee Sack  
**Back cover:** "Heading Out" by Joan Sindler

Fremont Adventure Recreation is a non-profit organization dedicated to promoting and creating outdoor recreation opportunities in Fremont County. For more information on its mission or how you can help, please visit [www.joinFAR.org](http://www.joinFAR.org) or contact [coordinator@joinFAR.org](mailto:coordinator@joinFAR.org). Fremont Adventure Recreation assumes no liability for injuries or accidents that occur while engaging in activities that are outlined in this pamphlet. Participants should act in accordance with their abilities and knowledge of the activities described.



## INTRODUCTION

Welcome to Cañon City and the Royal Gorge Region, a place we're proud to call home. From hiking to biking, river running to running on trails, outdoor recreation is becoming increasingly popular as people seek out authentic experiences and a connection with nature. Especially during times of uncertainty and adversity, access to trails, parks, and open spaces offer respite and space to breathe.

Embracing outdoor recreation and its positive impact on our community, Fremont Adventure Recreation (FAR) was launched in 2010 with a mission to promote a culture of community and healthy living through human-powered outdoor recreation in the Royal Gorge Region. Our non-profit organization remains dedicated to developing outdoor recreation opportunities, supporting adventure and community events, and building relationships through recreation. FAR is here to stay.

Our community thrives through its dynamic people, adventurous spirit, innovative schools, and historic charm. We are proud to play a part in the development of our community and recognize that none of our efforts would be possible without collaboration with land managers and government entities, partnerships with local businesses, and the strong hearts of our many volunteers. For this we are incredibly thankful.

We're excited you picked up our new adventure guide. From easy to expert, there's outdoor fun for everyone. Peruse the pages and use it as a catalyst for exploration and innumerable memories. Please check out FAR's website ([joinFAR.org](http://joinFAR.org)) for more information, events, and volunteer opportunities. Or "like" us on Facebook for updates. Get out and go FAR!



Brian Vanlwarden  
**Director**  
Fremont Adventure Recreation

# WELCOME TO THE ROYAL GORGE REGION

# FREMONT ADVENTURE RECREATION



Tunnel Drive, circa 1940 / Royal Gorge Regional Museum & History Center

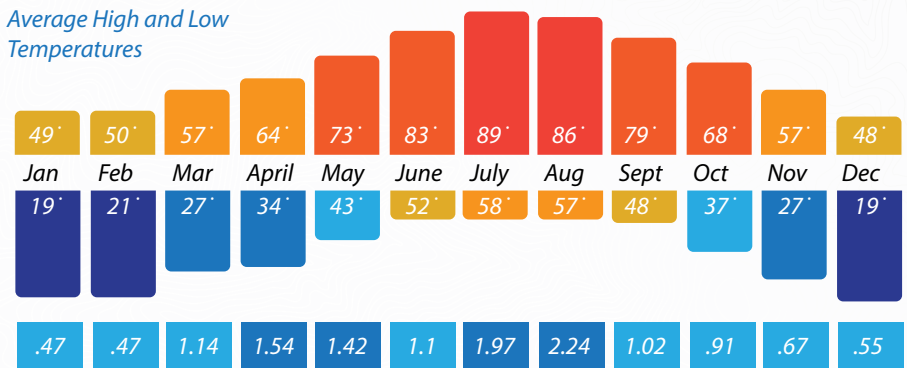
The year 2026 is a landmark year for both Colorado and the United States - a Sesquicentennial. It's the year that the USA celebrates 250 years since the signing of the Declaration of Independence and Colorado concurrently celebrates 150 years of Statehood.

It is an opportunity to reflect upon our history but also imagine our future together. In our community, you'll find rich history - of Ute, Cheyenne, and Jicarilla Apache tribes, early mining, recreation, trading, exploration, geology, paleontology, and more. It's a place where the border between two countries - Mexico and the US - shifted overnight in 1848 with the signing of the Treaty of Guadalupe Hidalgo. Our early agricultural efforts helped to support mining in the high countries. We sit in the heart of the West, at the crossroads of the mountains and the plains. Visit the Royal Gorge Museum and History Center for a glimpse into the region's agriculture, mining, and tourism history. Today, you'll discover a thriving community, and one of Colorado's longest historic downtown districts. Enjoy the Royal Gorge Region!

## AVERAGE LOCAL WEATHER

Cañon City is located in the "Banana Belt" of Colorado. Our unique geography allows us to enjoy more warm, sunny, precipitation-free days than many of our neighboring areas.

Average High and Low Temperatures



Average Precipitation (Inches)

Data courtesy of U.S. Climate Data / www.usclimatedata.com

Fremont Adventure Recreation was formed in 2010 to provide, support, and encourage outdoor recreation opportunities. Our mission is to promote a culture of community and healthy living through human-powered outdoor recreation in the Royal Gorge Region. To that end, we host events, provide social activities, and facilitate trail building and maintenance in Fremont County.



### CORE VALUES

- Community:** We commit to enhancing the quality of life for the citizens of the Royal Gorge Region through the creation and celebration of human-powered outdoor recreation adventures.
- Culture:** We commit to a welcoming attitude that values all relationships, fearless dedication, while having fun along the way.
- Stewardship:** We commit to responsible access as well as preserving recreation opportunities for future generations.

### BOARD MEMBERS

- |                 |                         |                         |              |
|-----------------|-------------------------|-------------------------|--------------|
| Brian Vanwarden | Joan Sindler            | Vicki Meier             | Travis Payne |
| Brian LeDoux    | Shawn Weatherhill       | Jon Banker              |              |
| Megan Numsen    | Coordinator: Kat McNeil | Coordinator@joinFAR.org |              |

### MEMBERSHIP

Join FAR as a member and enjoy perks like swag, e-newsletters, social events, and discounts. See joinFAR.org for more information on how you can be a member!



We'd love to see your adventures in the #RoyalGorgeRegion. Connect with us on social media to keep up with trail updates, activities, special events, FAR news, and inspiration.



**/FremontAdventureRecreation**  
Keep up with FAR and community events. See joinFAR.org to sign up for our newsletter.

**fremont\_adventure\_recreation**  
#joinFAR #canoncitycolorado #royalgorgeregion #ridecanoncity #royalgorgeparktrails #canoncity

**@joinFAR**  
Follow us on Twitter for reminders and updates on events.

# RECREATION EVENTS IN THE ROYAL GORGE REGION

# CARE FOR COLORADO LEAVE NO TRACE SEVEN PRINCIPLES



## JANUARY

**FAR New Year's Resolution Run**

## MARCH

SoCo Runners Spring Runoff - Pueblo  
Run through Time Marathon - Salida

## MAY

Blossom Festival / Royal Gorge Rodeo  
**FAR runBlossom 5K**  
Royal Gorge RIO River Clean Up  
Colorado Public Lands Day  
ZIA Rides Royal Gorge 6 & 12

## JULY

Fourth of July Fireworks  
Royal Gorge Whitewater Festival  
Fremont County Fair

## SEPTEMBER

Florence Pioneer Days  
National Public Lands Day  
Harvest Festival at the Abbey Winery  
The Crippler Road Bike Race

Salida Bike Fest - Salida

## NOVEMBER

CCRD Turkey Trot 5K and Turkey  
Bowl Flag Football Tournament  
SoCo Runners Temple Canyon Predict

## FEBRUARY

## APRIL

CCRD Clean Up Green Up  
RG RIO Volunteer River Clean Up  
Royal Gorge Groove Trail Runs / Rides

## JUNE

Hardscrabble Mtn. Trail Run  
**FAR Summer Social**  
FIBArk - Salida

## AUGUST

Temple Canyon Hill Climb (Motorized)

## OCTOBER

Rim to Rim Royal Gorge Races  
[www.rimtorimroyalgorge.com](http://www.rimtorimroyalgorge.com)  
Royal Rumble CO High School Mountain Bike  
Race - *Volunteer Opportunity*  
Bridge Burner Ultra - Revenant Running

Grassroots Gravel Bike Rides - Pueblo

## DECEMBER

Cañon City Parade of Lights  
SoCo Runners Rock Canyon Half Marathon

## KNOW BEFORE YOU GO

- Our state and federal agencies manage 42 percent of Colorado's majestic landscape, and our cities and counties maintain even more. Learn about and respect the spaces we all share.
- Stay back from the pack. Find your way to less-visited and off-peak destinations to minimize your connection with special places.
- Bring along reusable water bottles or hot drink tumblers to limit waste and stay hydrated in our dry climate.

## STICK TO TRAILS

- With 39,000 marked trails and 13,000 designated campsites, there's no need to venture beyond. By sticking to these areas and camping at least 200 feet from lakes, river, and streams, you're helping natural areas stay natural.
- Even though shortcuts can be tempting, please don't take them. A few extra strides on the path will protect plants and the homes of the true locals.

## LEAVE IT AS YOU FIND IT

- Leave plants, rocks, and historical items as you find them so others experience the joy of discovery.
- Any of our 750 different species of wildflowers will live forever in a photo. Snap away, but only with a camera.
- Colorado is beautiful all on its own. Building structures or campsites on public land isn't cool. Keep it pristine for everyone to enjoy.
- Treat all living things with respect. Carving or hacking plants and trees may kill or disfigure them.

## KEEP WILDLIFE WILD

- Colorado is home to tens of thousands of furry, scaly and feathered creatures. To keep them - and you - safe, don't approach them.
- It is not adorable to feed wild animals. You could alter natural behaviors, exposing them to predators or even euthanasia.
- Keep your furry buddies leashed when enjoying dog-friendly trails, and pack out their waste. All the way to a trashcan.

## TRASH THE TRASH

- Pack it in, pack it out. Or pick it up to leave a place better than you found it. Put litter, even crumbs, peels, and cores in your nearest waste/recycling bin.
- Wash yourself, your dog or whatever else needs cleaning at least 200 feet from waterways, and use biodegradable soap. A bubble bath is no treat for fish.
- If you have to poo, walk at least 70 steps from trails, water, and people. Dig a cat hole 6 inches deep, do your thing in the hole, cover it and pack our your TP. Or, use a wag bag (a disposable bag found in most outdoor stores) so you can pack out your waste.

## BE CAREFUL WITH FIRE

- Colorado's low humidity has perks, but can create dry, dangerous conditions. Keep campfires small and manageable to avoid sparking wildfires.
- When putting out a fire, water it until you can handle the embers. Never let a fire burn unattended.
- Use care when smoking in Colorado's dry climate. Always put cigarettes out completely, and don't leave your butts behind.
- Always check for local fire restrictions.

## SHARE OUR TRAILS & PARKS

- Chances are you're not out in nature to people watch, so try out the lesser-known paths and sites.
- Silence your cell phone before stepping into nature, and speak softly without using the speaker function.
- Be considerate when passing others on the trails and yield to the uphill hiker and biker - they need the momentum.
- Listen to nature. Keep your voice and music soft so all can enjoy the peace of Colorado.

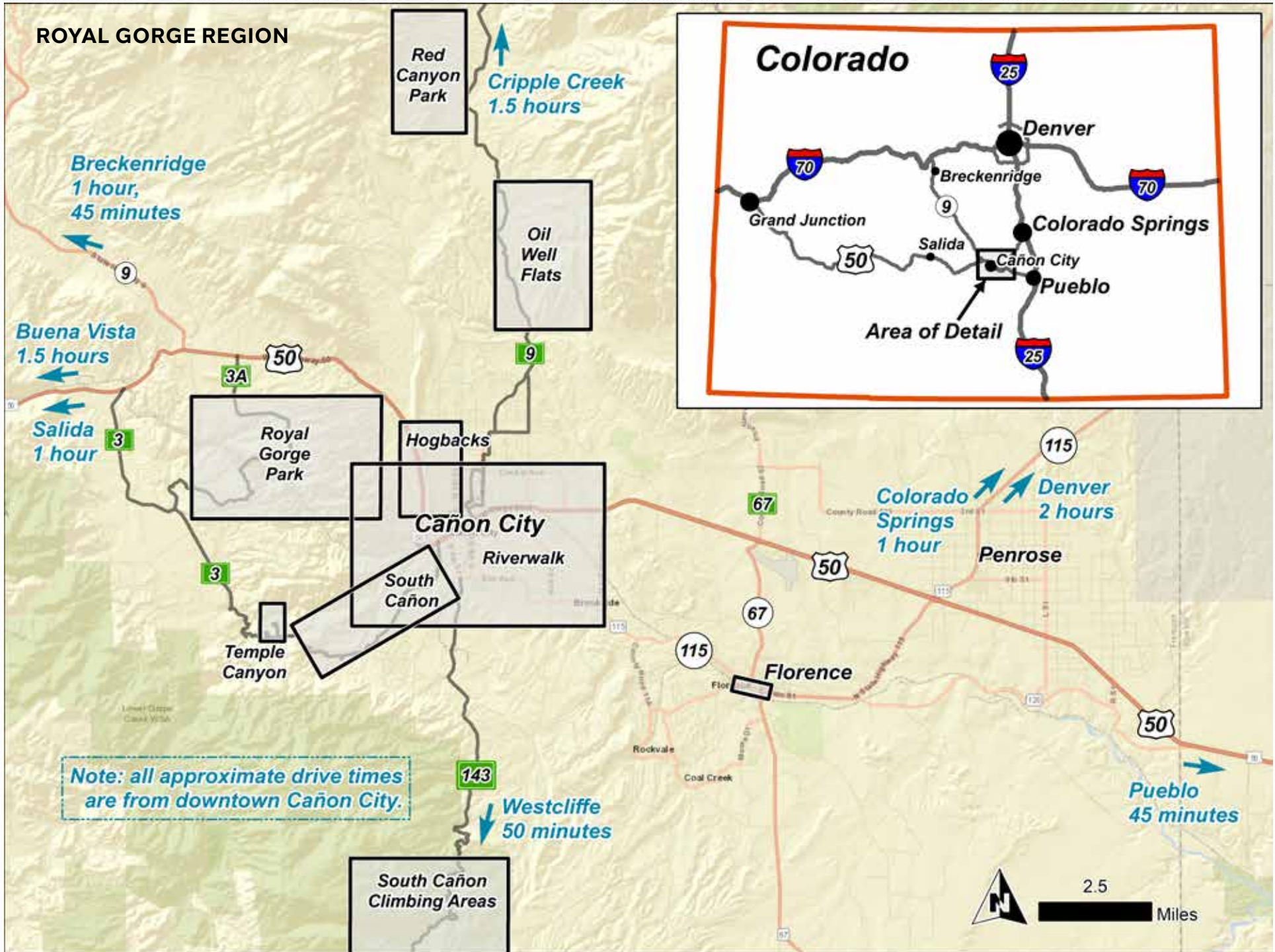


*Dates subject to changes; please check [joinFAR.org](http://joinFAR.org) for updated information. For a complete list of events in the Royal Gorge Region, please visit: [www.royalgorgetravel.com](http://www.royalgorgetravel.com)*

*The above are a selection from the Leave No Trace Seven Principles. ©Leave No Trace: [www.LNT.org](http://www.LNT.org).*



# ROYAL GORGE REGION



## BIKING, HIKING, & RUNNING



**Stay on designated trails.** Please stay on designated trails. Please comply with posted trail closings and revegetation signage. Do NOT trespass on private property.

**Yield to and be mindful of others on the trail,** including hikers, bikers, and equestrian riders. Use a bell or call out to let others know that you are near. Please dismount and wait on the side of the trail for equestrians to pass; do not assume that they see you and simply ride by.

**Leave wildlife alone.** If you encounter wildlife, please remember these lands are theirs, too.

**Be prepared.** Always know your own abilities, limitations, and equipment. You should be able to fix your equipment, provide basic first aid, and navigate trail systems.

### E-BIKES IN FREMONT COUNTY \*

#### E-BIKES ALLOWED:

**City / County / State roads:** open to approved motorized use.

**Seep Springs (BLM):** open to motorized use.

**Tanner/Stultz/Bear/Lions (USFS):** open to motorized use.

**Penrose Commons (BLM):** open to motorized use.

**Texas Creek (BLM):** open to motorized use.

**The Bank (BLM):** some routes open to motorized use.

**Oil Well Flats (BLM):** Roads are open to motorized use.

#### E-BIKES NOT ALLOWED:

**Riverwalk / Tunnel Drive (City/CCRD):** no motors, including any class of e-bike.

**Hogbacks (City):** no motors, including any class of e-bike.

**Royal Gorge Park (City):** no motors, including any class of e-bike.

**Oil Well Flats (BLM):** singletrack trails are non-motorized, including any class of e-bike.

**South Cañon (BLM/CCRD/City):** no motors, including any class of e-bike.

\* Current as of publication. Please check local regulations before heading out on trails.



**Colorado Trail Explorer**  
Colorado's Official Trail Map



Utilizing a trail app, like COTREX, is a great way to plan an appropriate route and track your progress.

COTREX is free to download and use, and no account is necessary.

Download maps for offline use when you don't have an internet connection.

Choose your user type to show trails for your desired activity.

Find it here: <https://trails.colorado.gov/>

### ESSENTIALS

1. Appropriate footwear
2. Map / compass
3. Extra food / water
5. Knife
6. Sunscreen/sunglasses
7. First-aid kit
8. Extra clothing layers
9. Trail map

Additional items for biking:

10. Patch kit
11. Spare tube(s)
12. Handheld pump
13. Bike multi-tool
14. Bike bell

# ROYAL GORGE PARK

If you're looking for a trail run, bike, or hike that will offer awe-inspiring views, this is it. Outdoor enthusiasts will find that the trails offer stunning views and plentiful options. The Royal Gorge Park Trails are funded in part by the 1% for Trails initiative.



Photo: Brian Vanwarden

## TRAIL INFORMATION

**Start:** Begin your ride/hike at one of several parking areas.

**Elevation gain:** +/- 600 feet

**Fitness effort:** Mild to difficult

**Difficulty:** Novice to advanced

**Terrain:** Natural surface singletrack

**Trail users:** Hikers, bikers, walkers

**Seasons:** Best in spring, summer, and fall.

**Dog friendly:** Yes. Keep all dogs on a leash

and watch for cacti along the trail. Bring waste bags and clean up after your pet.

**Distance:** 21 miles

## SUGGESTED ROUTES

**Beginner Route:** CR 3A Parking Lot > The Maze > S'Mores > Canyon Rim > Twisted Cistern | **Distance:** 5 mi. | **Elevation:** ~540 ft. **Approximate time:** 45 mins.

**Intermediate Route:** CR 3A Parking Lot > The Maze > S'Mores > Cañon Vista > FAR Out > Canyon Rim > Overlook Loop > Twisted Cistern | **Distance:** 9 mi. | **Elevation:** ~1,160 ft. | **Approximate time:** 1.5 hrs.

**Advanced Route:** Royal Gorge Ranch & Resort Trailhead > Point Alta Vista Trail > One Track Mind > Made in the Shade > Twisted Cistern > Overlook Loop > Rock Hardy > Overlook Loop > Canyon Rim > FAR Out > Cañon Vista > S'Mores > Dreamweaver > Made in the Shade > One Track Mind | **Distance:** 20 mi. | **Elevation:** ~2,696 | **Approximate time:** 2.5 hours



Point Alta Vista and trestles can be accessed via One Track Mind (difficult) and the Point Alta Vista Trail via the Royal Gorge Ranch & Resort (easy).

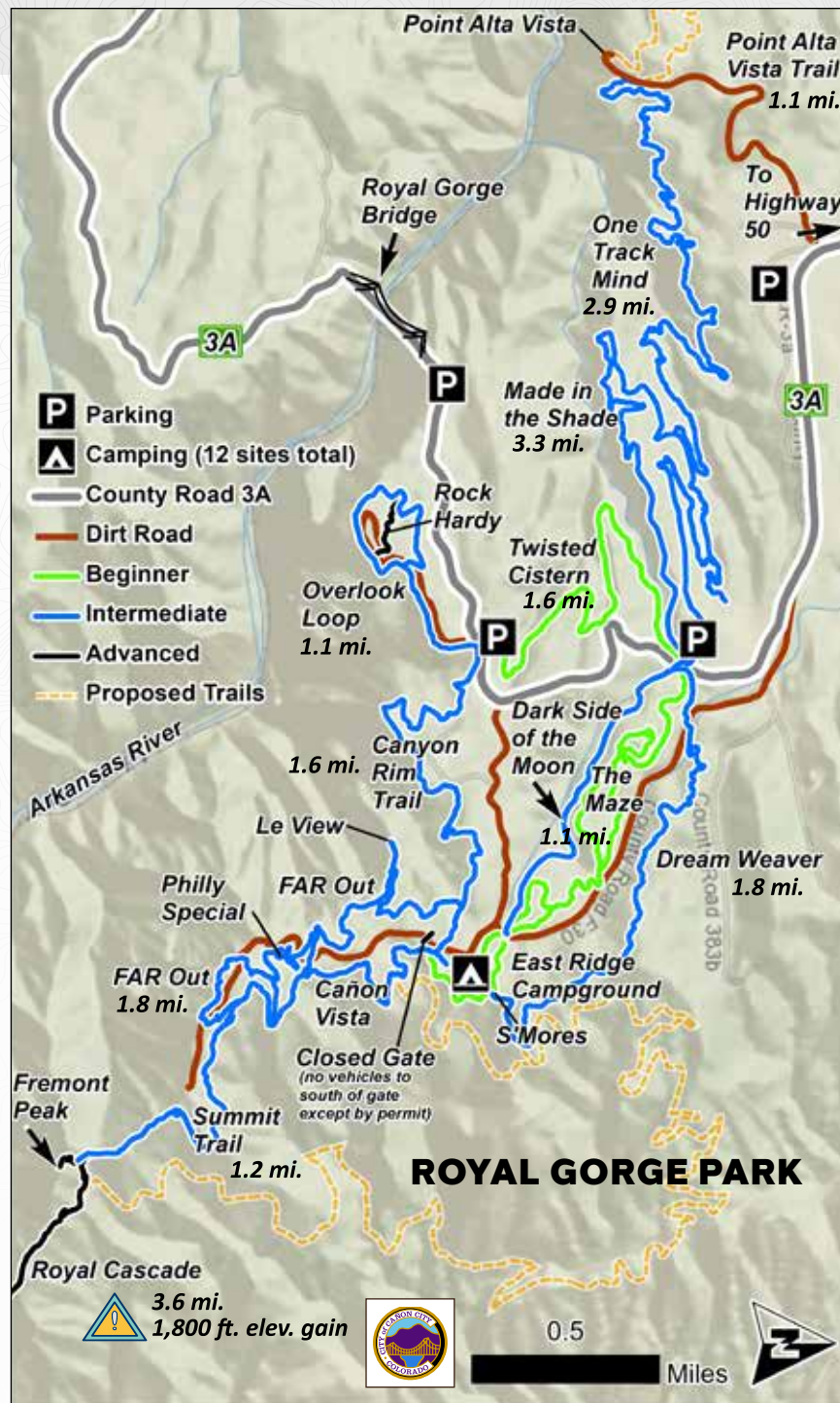
**BETA TIP**

## GETTING THERE

From downtown, head west on US Highway 50. At the turnoff for the Royal Gorge Bridge, turn left (south) and follow County Road 3A until you reach your desired trailhead. For Point Alta Vista, park at the parking lot just .5 miles from Hwy 50 on the right.



The Fremont Peak connection trail is subject to seasonal closures for hunting and to protect ewes and lambs during lambing. Please respect and adhere to these hours:  
June-July - CLOSED / September-October - open 9-5 / OPEN all other times



HIKING

MOUNTAIN BIKING

# TUNNEL DRIVE / ROYAL CASCADE

This section of the Arkansas Riverwalk offers stunning views. Pass through historic tunnels (built for the city's water delivery system in the late 1800s), and view the historic Denver & Rio Grande Railroad. You may also catch a glimpse of river runners as they make their way from the Royal Gorge. Keep your eyes open for Colorado's state mammal: the bighorn sheep, but please keep your distance and respect wildlife.



## TRAIL INFORMATION

**Start:** Begin your walk or ride at the trailhead, located off of Tunnel Drive.

**Distances:** Tunnel Drive: 1.92 miles from trailhead to end. For beginner / intermediate recreation, use as out-and-back. Royal Cascade: 3.6 miles

**Elevation gain:** Tunnel Drive: 120 ft. ; Royal Cascade: +/-1,800 ft.

**Fitness effort:** Mild to Extremely Strenuous

**Difficulty:** Novice to Expert

**Terrain:** Tunnel Drive: dirt road, Royal Cascade: steep natural surface singletrack

**Seasons:** All (use caution after rain / snow)

**Trail users:** Hikers, bikers. Tunnel Drive is a great trail for strollers, but use caution

when biking with young riders. There is a steep drop-off on one side of the trail. Royal Cascade is a black diamond trail suitable only for those with a high fitness level and advanced skills due to exposure, steep terrain, and numerous switchbacks.

**Dog friendly:** Yes. Keep your dog on a leash, bring waste bags, and remove pet waste.

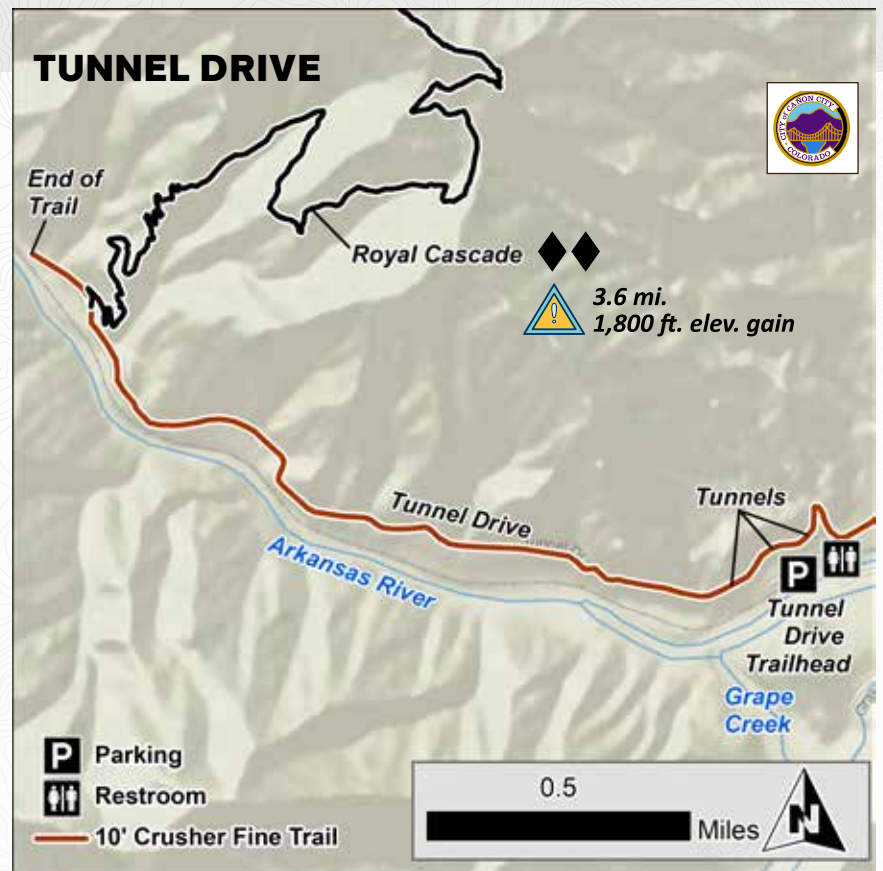
**Notes:** This trail can be hot in the summer months. Be sure to bring water. Due to potential rock falls, avoid this area after a freeze-thaw cycle of weather (when it has been very cold and then warm), or after heavy rains.

## GETTING THERE

From Hwy. 50, turn west onto Tunnel Drive. The road dead-ends at the trailhead. Royal Cascade begins at mile 1.7 on Tunnel Drive and connects to Summit Trail at the Royal Gorge.



Royal Cascade is subject to seasonal closures for hunting and to protect ewes and lambs during lambing. Please respect and adhere to these hours:  
June-July - CLOSED / September-October - open 9-5 / OPEN all other times



Royal Cascade connects to the Royal Gorge Trails, but is a steep trail with points of exposure, rock features, and numerous switchbacks. Know your abilities!

**BETA TIP**

# TEMPLE CANYON PARK

Temple Canyon is the ancestral land of the Utes. Dubbed 'The Temple' by later explorers and tourists, the site (along with hundreds of surrounding acres) was acquired as a city park in 1912, after the forced removal of the Utes to reservations in Southern Colorado and Utah. The rock alcove was formed by continual seepage of water into small fissures in the rock. The hike itself begins by parking at the campsite indicated on the map. For a longer hike with more historical detritus and more than half a dozen creek crossings, you can park further up Temple Canyon Road at the restrooms just before the bridge.



## TRAIL INFORMATION

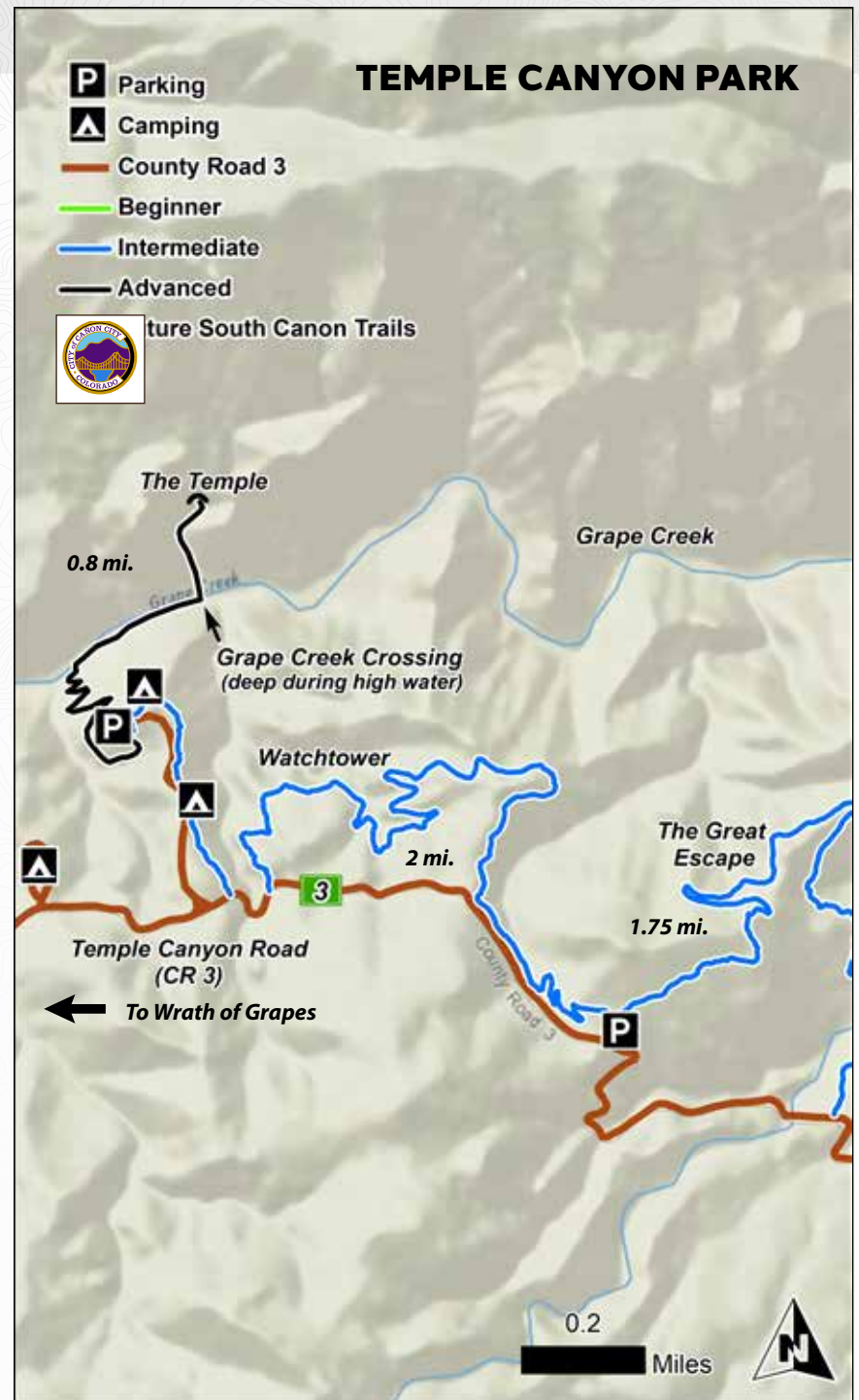
**Start:** Begin your hike at the parking lot off County Road 3.  
**Elevation gain:** 300 foot descent from parking lot to Grape Creek, 50 foot ascent from the creek to the Temple  
**Fitness effort:** Moderate to strenuous  
**Difficulty:** Intermediate to advanced  
**Terrain:** Steep switchbacks to flat creekside singletrack  
**Seasons:** Best in early spring, summer, fall  
**Trail users:** Hikers  
**Dog friendly:** While you are welcome to bring dogs on this trail, please be advised that there is a great deal of cactus and also

the potential for snakes. Be cautious! Keep your dog on a leash, bring waste bags, and clean up after your pet.  
**Distance:** .6 miles or 1.25 miles one-way (depending on which trailhead you use)

**Note:** The longer version of this trail is inadvisable during higher water flows as there are no bridges across the creek. Please check stream flows before attempting creek crossings. In late summer or early spring, flows are usually low enough to cross safely. Also, be aware of tall grasses that can hide snakes and spiders.

## GETTING THERE

From downtown, take 1st Street south for approximately 1 mile, and take a right (west) onto Temple Canyon Road (CR3). Continue on this road for an additional 5.1 miles. You'll see a turnoff on your right (north); take this and follow it to the terminus (about 1/2 a mile). You will see the trailhead past the restrooms. For a longer hike, do not take the turnoff, but continue an additional 1.25 miles to the bridge. This hike will require you to cross the creek at various locations, some of them not well-marked.



# HOGBACKS OPEN SPACE

The Hogbacks is Cañon City's in-town geologic wonder - the beautiful Dakota Formation, which stretches from Mexico to Canada. Within all of the layers of the Dakota formation lie a record of Colorado's past as an inland sea! Please note the singletrack trails in the Hogbacks are composed of clay soils; please stay off when wet. Enjoy the crusher fine trails, Greenhorn and Old Skyline Drive, during and after precipitation events.



## TRAIL INFORMATION

**Start:** Trailheads at Floral Ave., Greenway Dr., Dr., Washington St., or High St.

**Elevation gain:** Varies

**Fitness effort:** Mild to moderate

**Difficulty:** Novice to advanced

**Terrain:** Wide path to natural surface singletrack

**Seasons:** All (except when muddy)

**Trail users:** Hikers, bikers, walkers, and cars (traveling one-way) on the paved portions of Skyline Drive

**Dog friendly:** Yes. Keep your dog on a leash, bring waste bags, and clean up after your pet. Leash law is enforced. This area often has wildlife.

**Distance:** ~ 2 miles one way, south to north

**Greenhorn:** Less than two miles one-way, this wider crusher-fine trail connects with others in the area to broaden your experience. It's family-friendly, and great for beginners.

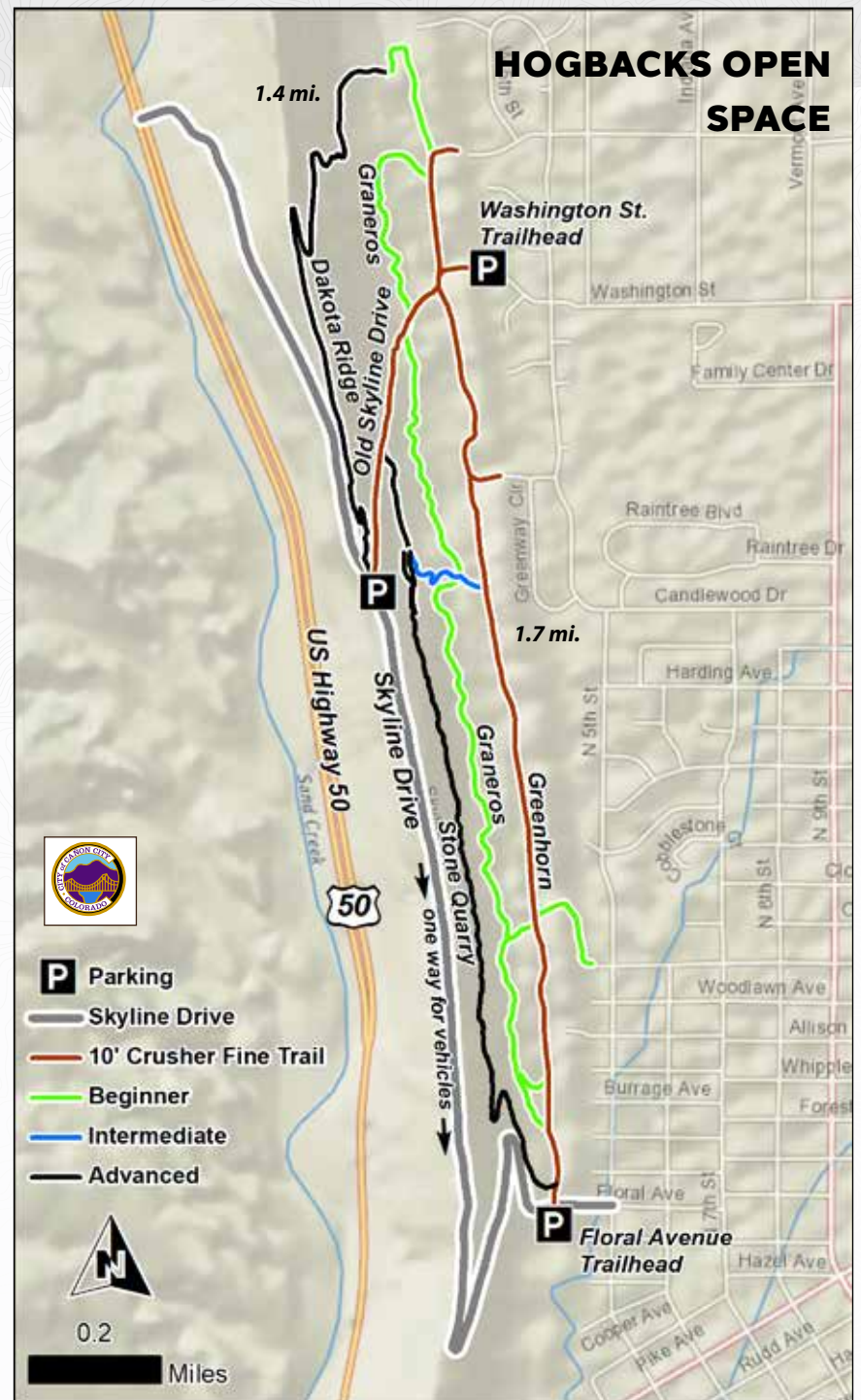
**Old Skyline Drive:** Also a wide crusher fine trail, historic Old Skyline Drive connects low and high points in the open space.

**Graneros:** A fun beginner's trail, Graneros is flowy as it winds along the flank of the Dakota formation in the Hogbacks.

**Dakota Ridge:** Definitely for the more advanced cyclist, hiker, or trail runner, this trail travels atop the crest of the formation. The trail descends from the ridge on very steep bedrock.

## GETTING THERE

From Main Street in Cañon City, head north on 5th Street for about .5 mile until you reach Floral Avenue. Take a left (west) uphill and through the sowback formation. Parking will be on your left (south) side of the road. (\*This is where Skyline Drive descends into town.)



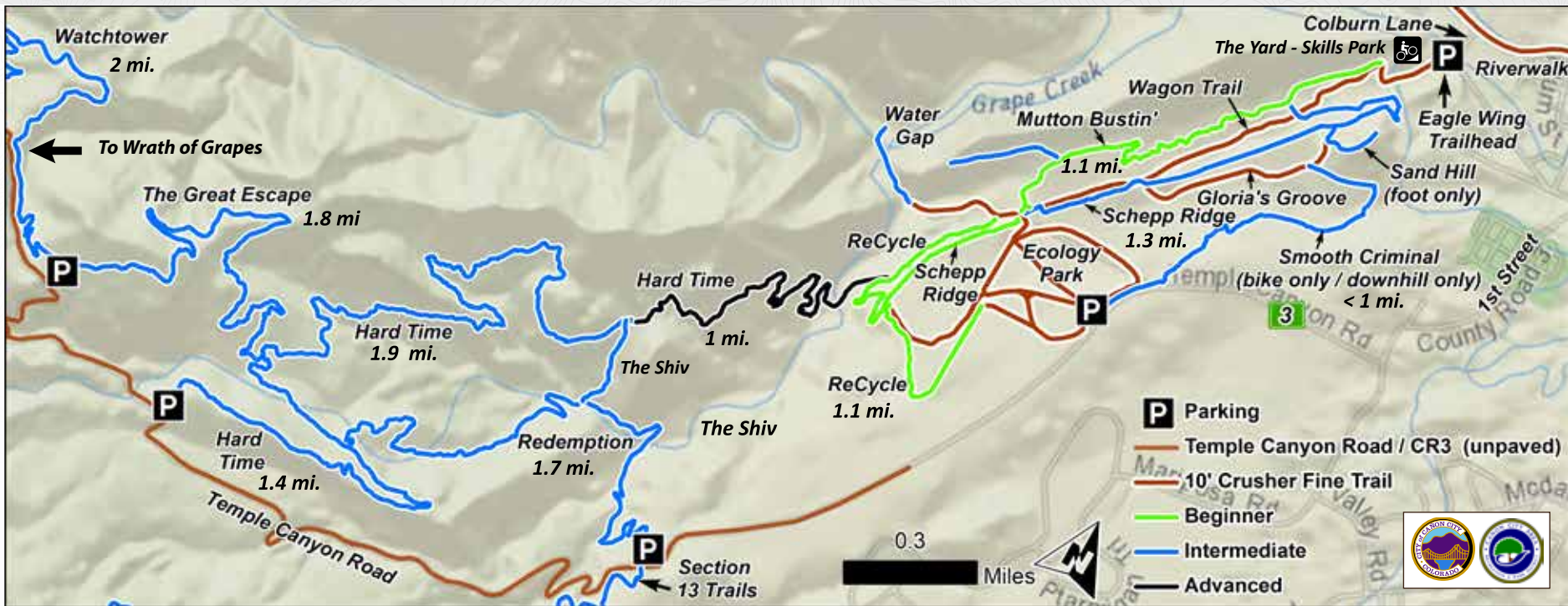
HIKING

MOUNTAIN BIKING

FOSSIL DISCOVERY



# SOUTH CAÑON TRAILS



Discover flowy, easier trails close to town, or try to master the technical climb of Hard Time to the incredible views of Watchtower. Ride laps on Smooth Criminal or head to The Yard MTB Skills Park to work on bike skills. Remember to ride at your ability and comfort level only.

## SUGGESTED ROUTES

**Beginner Route:** Eagle Wing Trailhead > Wagon Trail > Mutton Bustin' | **Distance:** 2.4 mi. **Elevation:** 275 ft. | **Approximate time:** 20 mins.

**Intermediate Route:** Eagle Wing TH > Mutton Bustin' > Schepp Ridge > Piñon > Recycle > Water Gap > Schepp Ridge > Mutton Bustin' | **Distance:** 5 mi. | **Elevation:** ~500 ft. **Approx. time:** 45 mins.

**Advanced Route:** Eagle Wing Trailhead > Mutton Bustin' > Schepp Ridge > Recycle > Temple Canyon Road > Redemption > Great Escape > Hard Time > Recycle > Mutton Bustin' | **Distance:** 14.5 mi. | **Elevation:** 1,950 ft. | **Approximate time:** 1.5 hrs.

## TRAIL INFORMATION

**Start:** Ecology Park or Eagle Wing  
**Elevation gain:** Varies  
**Fitness effort:** Mild to strenuous  
**Difficulty:** Novice to advanced  
**Terrain:** Natural surface singletrack  
**Seasons:** All seasons.

**Trail users:** Hikers, bikers, equestrians  
**Dog friendly:** Yes. Be courteous of others and keep your dog on a leash, bring waste bags, and clean up after your pet. This is a popular trail for dog owners and picking up/ disposing of waste is important.



Rider: Ian Ensinger  
 Photo: Justin Ensinger

## GETTING THERE

**Eagle Wing Trailhead:** From downtown, turn south onto 1st Street, then west on Riverside Drive. Turn left (south) on Colburn Lane. The parking area will be on your right. Note that this trailhead is only open from dawn to dusk.

**Ecology Park Trailhead:** From downtown, turn right (south) onto 1st Street. Follow 1st Street to a Y in the road, where you will bear right (west) onto County Road 3. Trailhead in about 1 mile on right.

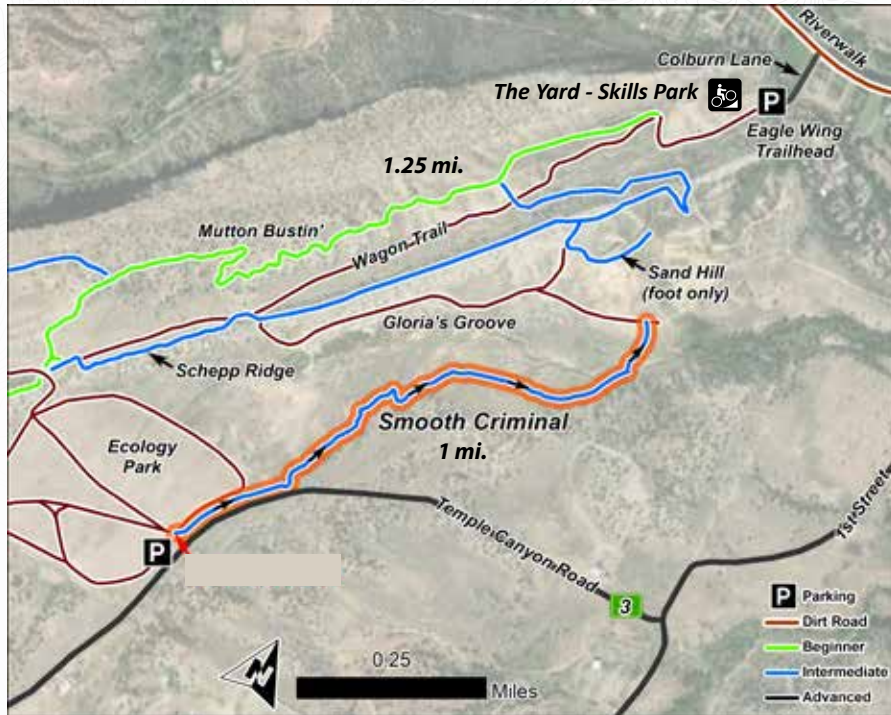


**BETA TIP**

Ride or run from downtown or Centennial Park! Just take the Riverwalk and head up Colburn Lane to the Eagle Wing trailhead.

# SMOOTH CRIMINAL FLOW TRAIL

# THE YARD MTB SKILLS PARK



Smooth Criminal is a purpose-built, DOWNHILL mountain bike flow trail. It is designed to encourage speed and also to aid in skills progression for jumping.

## SUGGESTED ROUTES

**Beginner Route:** Ecology Park > Coyote > Smooth Criminal > Schepp Ridge > Ecology Park | **Distance:** 2 mi. loop | **Elevation:** 150 ft. | **Approximate time:** 20 mins.

## TRAIL INFORMATION

**Start:** Ecology Park or Eagle Wing  
**Elevation gain:** 150 ft.  
**Fitness effort:** Mild to moderate  
**Difficulty:** Intermediate to advanced  
**Terrain:** Natural surface singletrack

**Seasons:** All seasons.  
**Trail users:** Mountain bikers ONLY  
**Dog friendly:** No. Adjacent Ecology Park is a perfect place to enjoy a walk with your pet.



Ride at your own comfort and ability level! Practice the pre-ride, re-ride, free-ride technique of becoming familiar with trail features and speed.  
**DO NOT RIDE BACK UPHILL.** Use Gloria's Groove to return to the parking area.



## THE YARD SKILLS PARK

The Yard is a mountain bike skills park for intermediate to advanced skills development. It is directional - be aware of the two downhill lines and one uphill return trail.

## TRAIL INFORMATION

**Start:** Eagle Wing Trailhead  
**Fitness effort:** Mild to moderate  
**Difficulty:** Intermediate to advanced  
**Terrain:** Natural surface singletrack and fabricated features  
**Trail users:** Mountain bikers ONLY

## GETTING THERE

**Eagle Wing Trailhead:** From downtown, turn south onto 1st Street, then west on Riverside Drive. Turn left (south) on Colburn Lane. The parking area will be on your right. Note that this trailhead is only open from dawn to dusk.

**Ecology Park Trailhead:** From downtown, turn right (south) onto 1st Street. Follow 1st Street to a Y in the road, where you will bear right (west) onto County Road 3. Trailhead in about 1 mile on right.



## RIVERWALK BIKE PARK

The Rivewalk Bike Play Park is a great way to practice beginner skills on a variety of features. Practice pedaling some boulders, balance on the skinnies, or just play around!

## TRAIL INFORMATION

**Start:** Sells Avenue Trailhead  
**Fitness effort:** Mild to moderate  
**Difficulty:** Beginner to Intermediate/Adv.  
**Terrain:** Natural and fabricated features  
**Trail users:** Mountain bikers ONLY

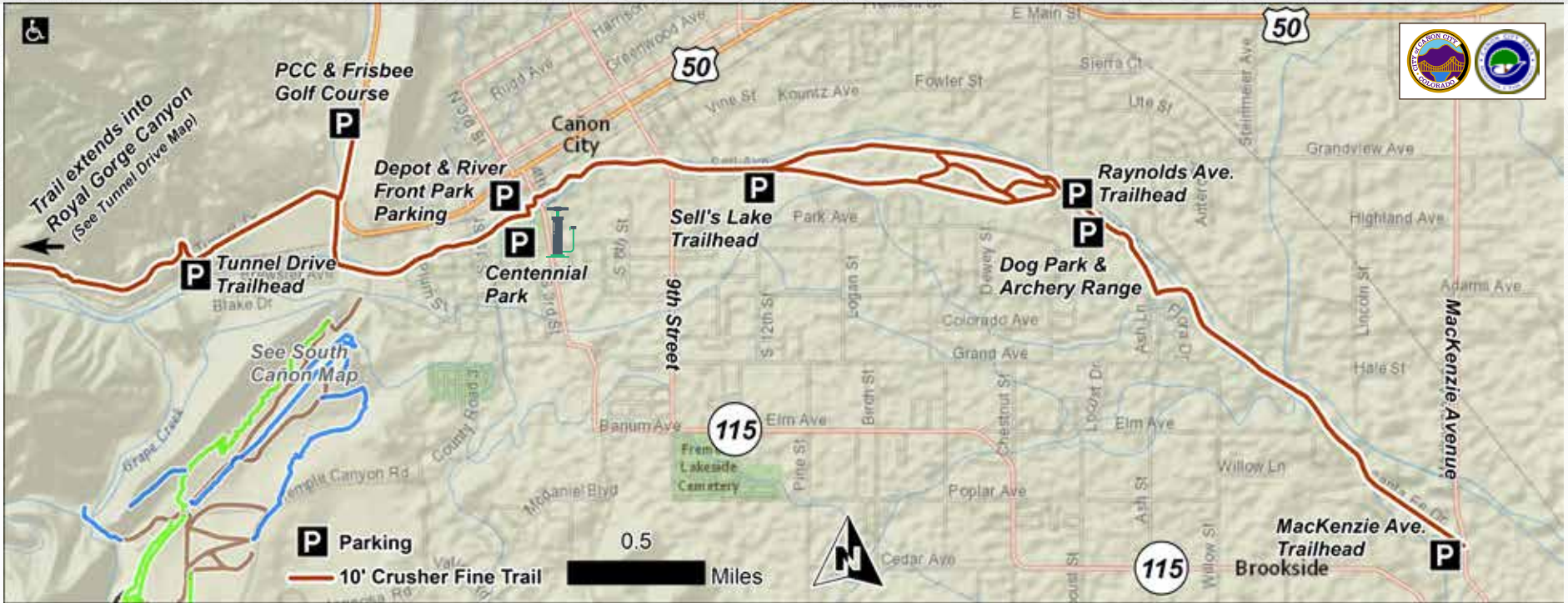
## GETTING THERE

**Sells Avenue Trailhead (Riverwalk):** From downtown, turn south onto 9th Street, then east on Sells Avenue and head to the end. The park is about 100 yards east. Note that this trailhead is only open from dawn to dusk.

**Other locations:** From either end of the Riverwalk, travel toward the Sells Avenue parking lot and find the play park just east, past the restrooms.



# ARKANSAS RIVERWALK TRAIL



The Riverwalk Trail runs through some of the most scenic and historic parts of Cañon City. Along the 7-mile stretch of the trail, you'll track the river's course through the city, passing historic properties, open farmland, and cottonwood groves. The trail is a mostly flat, wide, maintained trail that is open during all seasons. A system of fitness stations has recently been added to the trail and are located near the Sell's Lake trailhead.

## TRAIL INFORMATION

**Start:** You can begin your walk along the Riverwalk Trail at a number of points. Popular parking areas are Centennial Park, Sell's Lake (off 9th Street), MacKenzie Avenue Trailhead, and Tunnel Drive.

**Distance:** Total distance = 7.5 miles one-way

**Elevation gain:** 200 feet total

**Fitness effort:** Mild

**Difficulty:** Novice

**Terrain:** The trail is mostly flat and graded natural surface with crusher fines and occasional paved sections.

**Seasons:** January-December

**Trail users:** This trail is used by hikers, bikers, walkers, bird watchers, strollers, and runners. Horses are not allowed on most of the trail.

**Dog friendly:** Yes. Keep your dog on a leash, bring waste bags, and clean up after your pet. There is a dog park located just east of Reynolds bridge.

**Note:** At high water (late May-June), the trail may be closed at 9th Street.

*The Riverwalk is a crusher-fine trail, which means it dries out faster than most trails after rain or snow.*

**BETA TIP**



## GETTING THERE

To begin at the furthest trailhead west on the trail, take Highway 50 west. Take a left turn (west) onto Tunnel Drive. Go about one mile to the Tunnel Drive Trailhead. You can travel west or east on the trail from this point.

To begin at the Sell's Lake Trailhead, from Highway 50 in Cañon City, take 9th Street south. Take a left (east) onto Sell Avenue and park at the trailhead. Both the river and bluff trail will intersect at Reynolds Avenue, where you can continue east or loop back to the Sell's Lake Trailhead.

# OIL WELL FLATS

Oil Well Flats utilizes some dirt roads, but consists mostly of singletrack trails. Cruise through junipers and piñons as you ascend toward Fire Canyon and Unconformity, areas that were altered in 1988 as a wildfire scorched the area.



## TRAIL INFORMATION

**Elevation gain:** 800 feet from the first parking area to the high point - Island in the Sky  
**Fitness effort:** Medium to strenuous  
**Difficulty:** Novice to advanced  
**Terrain:** Rocky; natural surface singletrack  
**Seasons:** Best during spring and fall; rideable in winter when dry; summer will be hot  
**Trail users:** Hikers, bikers, equestrians  
**Dog friendly:** Be courteous of others and

keep your dog on a leash, bring waste bags, and clean up after your pet.  
**Distance:** ~12 miles total for a round trip on the singletrack (double up or ride in reverse)  
 Note: Hikers tend to prefer the two upper parking lots to access the higher terrain. Horse trailer parking is available in the second lot.

Please be aware that Oil Well Flats is home to some grazing, and plan accordingly. This area is closed to motorized vehicles during muddy conditions. Respect all trail / gate closures to help maintain the integrity of the trails. Check the BLM or FAR website for updates on conditions and closures. Expect and be courteous to equestrians.

## SUGGESTED ROUTES

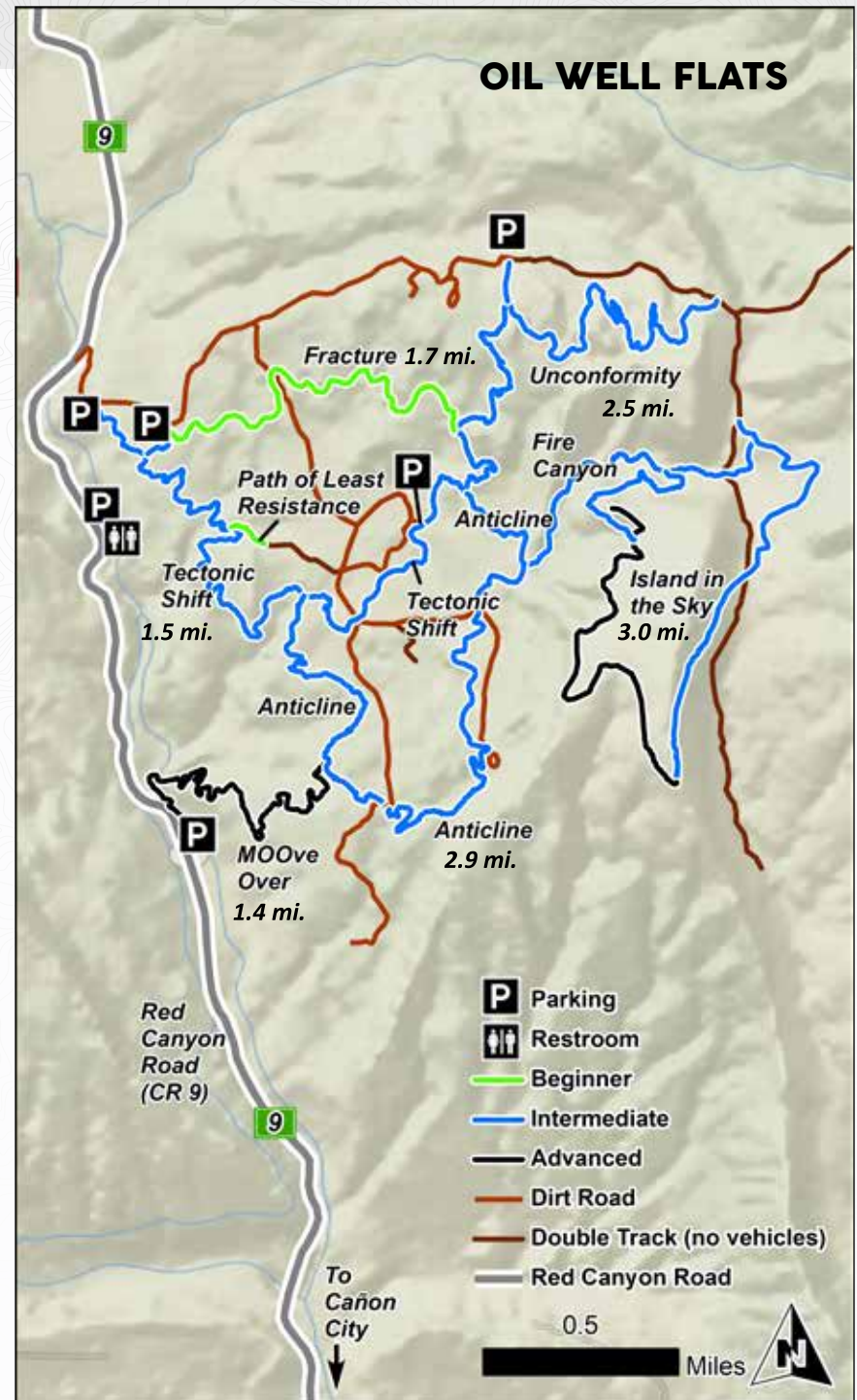
**Beginner Route:** 1st Parking Lot > Tectonic Shift > Fracture out-and-back | **Distance:** 4 mi. **Elevation:** 430 ft. | **Approximate time:** 25 mins.

**Intermediate Route:** 1st Parking Lot > Fracture > Tectonic Shift > Anticline > Tectonic Shift  
**Distance:** 6.5 mi. | **Elevation:** 730 ft. | **Approximate time:** 1 hr.

**Advanced Route:** MOOve Over > Anticline > Fire Canyon > Island in the Sky > Unconformity > Fracture > Tectonic Shift > Anticline > MOOve Over | **Distance:** 14.5 mi. | **Elevation:** 2,100 ft. **Approximate time:** 2 hours

## GETTING THERE

From downtown or Hwy 40, turn left (north) onto 15th Street and continue for .9 miles. Turn right (east) on Central Ave. and continue for 1 mile. Turn left (north) onto Field Ave. and continue for 2.2 miles. Continue north at intersection with Red Canyon Rd. for 3.7 miles. Turn right (east) on dirt road and continue to parking lots.



# RED CANYON PARK

At Red Canyon Park you can explore 600 acres of beautiful red rock from the Fountain Formation. Formed 290-296 million years ago, this rock was created by a series of braided streams carrying material eroded off of the Ancestral Rocky Mountains. Managed by the City of Cañon City, the secluded Red Canyon Park is a locals' favorite.



## TRAIL INFORMATION

**Start:** Various parking lots and camp areas  
**Elevation Gain:** Varies  
**Fitness effort:** Mild to moderate  
**Difficulty:** Novice to intermediate  
**Terrain:** Natural surface  
**Seasons:** Year-round

**Trail users:** Hikers, mountain bikers, walkers, equestrians  
**Dog friendly:** Yes. Keep your dog on a leash, bring waste bags, clean up after your pet.  
**Distance:** Chipeta's Way - ~4 miles  
**Pioneer Pathway (adaptive accessible) -**

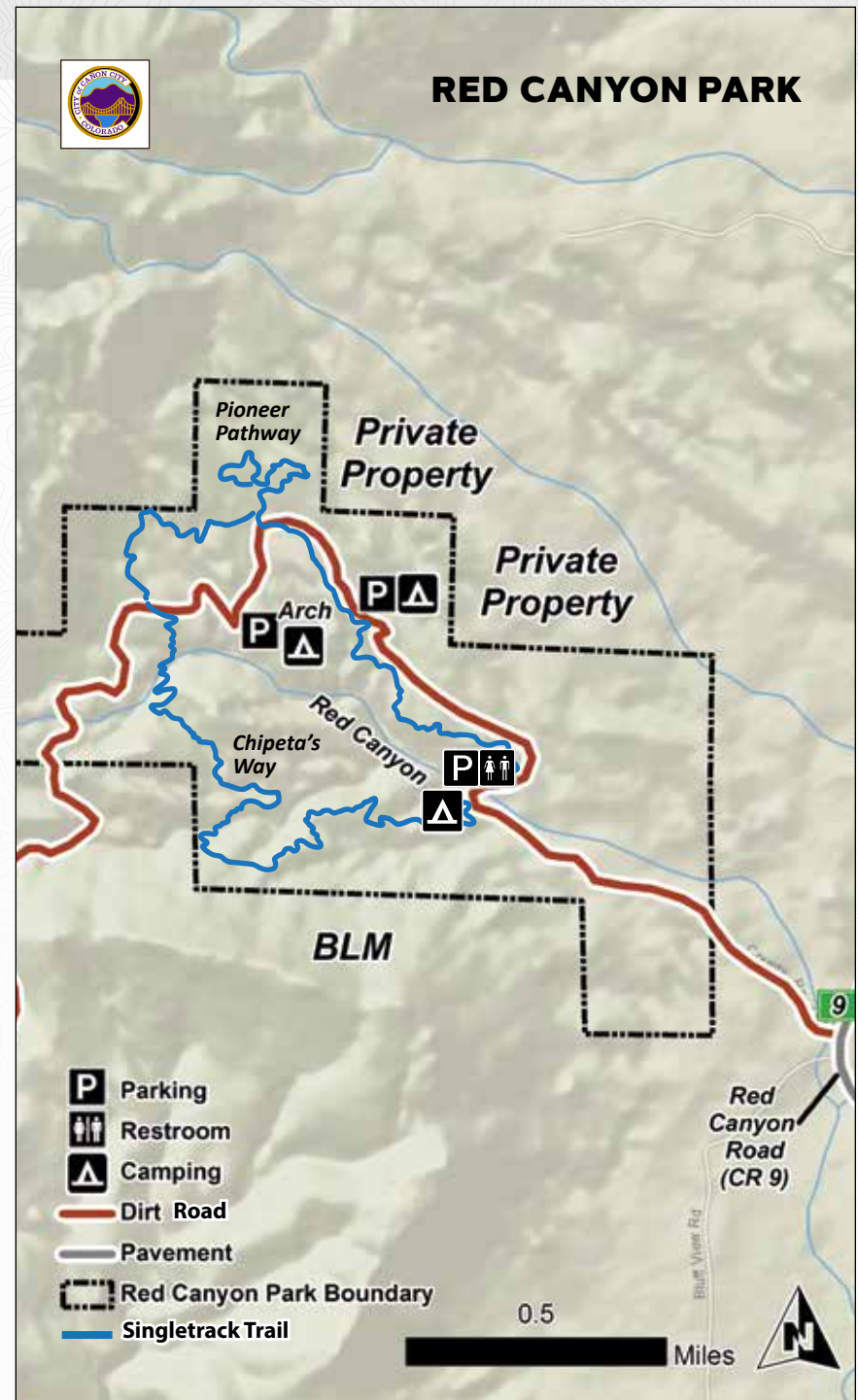
**Red Canyon Trails:** From the main parking area of of CR 9, you can hike into the main wash (Guy's Gulch) for a canyon-like experience. The new ~4-mile loop - Chipeta's Way - also begins from this parking area and features several scenic viewpoints. Adventurers with adaptive needs can access the Pioneer Pathway for views on the roughly 1.2-mile double-loop trail on the north end of the park.

## GETTING THERE

From Highway 50, head north on 15th Street and continue for .9 miles. Turn right (east) on Central Avenue and continue for 1.0 miles. Turn left (north) onto Field Avenue and continue for 2.2 miles. At the Y, travel north on Red Canyon Road for approximately 7 miles. Red Canyon Park will be on your left. Take care after a snow or rain storm; roads can have deep ruts at times.



Remember to respect private property and do NOT cross fences.



# NEWLIN CREEK / FLORENCE MTN. PARK

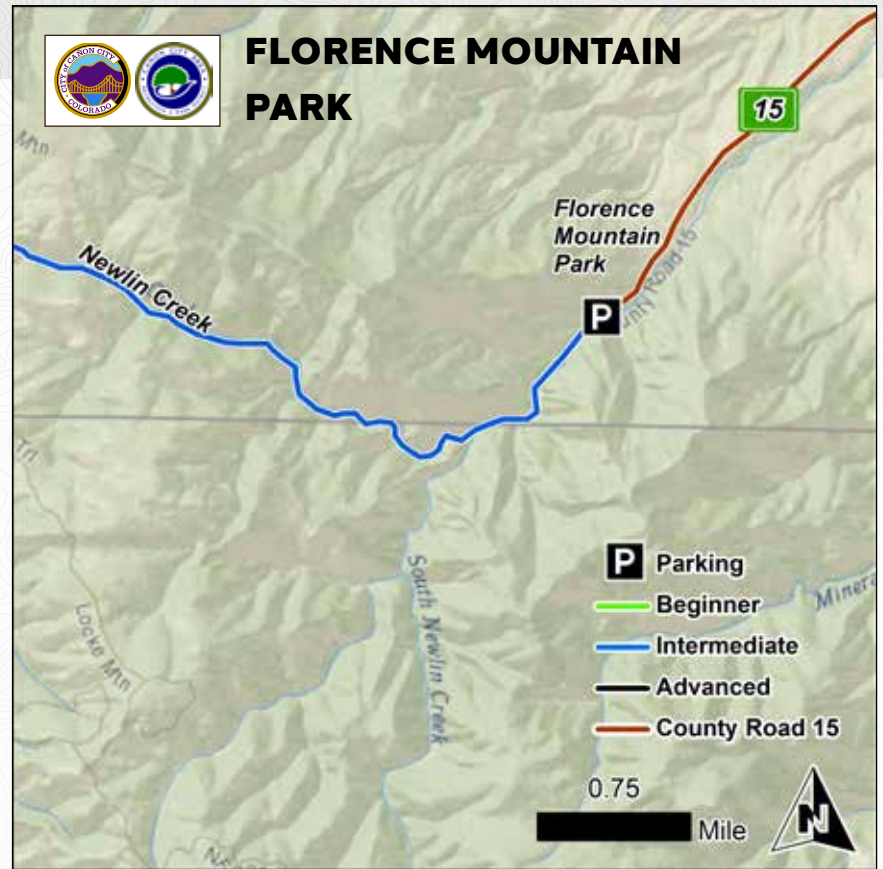
Nestled in the Wet Mountains south of Florence, Florence Mountain Park is an easily-accessible escape from the high mountain desert. Just a few minutes from downtown, the park features pine forests and granite outcroppings. The local favorite is Newlin Creek trail. This winding trail follows Newlin Creek and is relatively easy for the first .75 miles. Make the creek bridge a destination for families with small children. For others, travel 3 miles to reach the alpine meadow where remnants of the Herrick Sawmill, built in 1887, now lie abandoned.



Photo courtesy of Mark Peacock



Photo courtesy of Kristan Lepik



HIKING

ROCK CLIMBING

## TRAIL INFORMATION

**Start:** Newlin Creek Trailhead  
**Distance:** Total distance = ~ 6 miles  
**Elevation gain:** 1,735 feet  
**Fitness effort:** Mild to moderate  
**Difficulty:** Novice to intermediate  
**Terrain:** The trail is singletrack with some creek crossings  
**Seasons:** Year-round with some snow and ice after heavy snow. Be aware of high stream flows in the spring.  
**Trail users:** Hikers and rock climbers

**Dog friendly:** Yes. Keep your dog on a leash, bring waste bags, and clean up after your pet. Leash law is enforced. This area often has wildlife.  
**Note:** No open fires are permitted in the Park. Fire pans or designated receptacles must be utilized. Please be aware that if a red-flag warning is in effect, the park may be closed. Overnight camping is not permitted except by license agreement.



The park features a rustic log amphitheater. Follow signs for Newlin Creek and turn L at the sign for 'Amphitheater'. This space may be reserved for events. Contact Florence City Hall at 719-784-4848.



## GETTING THERE

From Florence and Highway 115, turn south onto CO-69. Follow this road for 4.3 miles, then veer right onto County Road 15. Keep right for another 2.5 miles until you see the sign for Florence Mountain Park. Continue past the groundskeeper's cabin for .9 miles until you reach the trailhead.

# PHANTOM CANYON / SHELF ROAD

This scenic and challenging ride offers cyclists the opportunity to traverse some of Fremont County's historic roads, linking the quaint gold mining towns of Cripple Creek and Victor with Phantom Canyon Road, part of the Gold Belt Byway.



Photo courtesy of Rodeo Adventure Labs

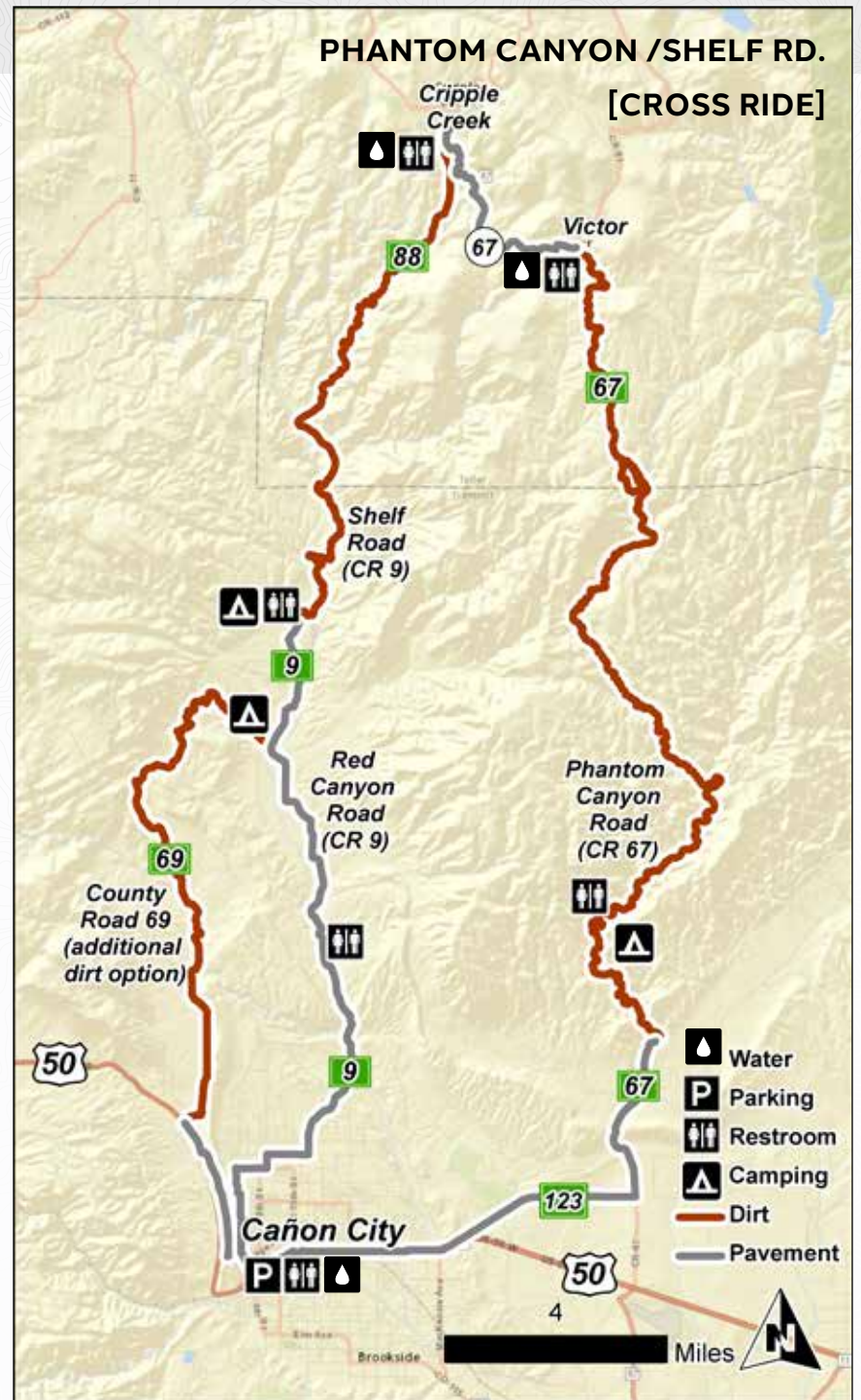
## ROUTE INFORMATION

|  |   |
|--|---|
| <b>Start:</b> Downtown Cañon City            | <b>Terrain:</b> Dirt and pavement                           |
| <b>Elevation gain:</b> +/- 7,940 feet        | <b>Seasons:</b> Year-round, check road conditions in winter |
| <b>Fitness effort:</b> Moderate to strenuous | <b>Distance:</b> 68 miles                                   |
| <b>Difficulty:</b> Intermediate              |   |

Head east on Hwy. 50, then east on County Road 123. At the intersection of CR 123 and CR 67, turn north on Phantom Canyon Road. The first three miles are paved, but then you'll be treated to an incredible dirt road journey up through Phantom Canyon, gaining elevation all the way. The climbing is mostly gradual, but at times kicks up to a more challenging pitch. The views of the canyon, the creek, or back to the west toward the Sangre de Cristo Mountain Range are stunning, and traffic is nominal. At times the road is tight, and is typically in washboard condition. If you ride this route counter-clockwise, however, neither are significant issues. \*Please note that this entire route can obviously be ridden in a clockwise direction, but the washboard descent on Phantom Canyon is more difficult.

Higher in elevation, you'll roll through conifers and ranches into the old mining community of Victor. You are now in the high country, and the wide open expanse is exceptional. At Victor, grab Highway 67 for a quick, paved jaunt to Cripple Creek. Be mindful that Highway 67 sees both tourist and commercial mining traffic. The views are great, but stay focused on the road.

At Cripple Creek, you'll have reached the ride's high point, at well over 9,000 feet in elevation. From this point you'll travel back to the south via the legendary Shelf Road (CR 9). The dirt descent is both steep and sometimes a bit dicey, depending on road conditions. The road is narrow, so be mindful of traffic and steep exposure. You'll be treated to a beautiful 14 miles of dirt road. Once County Road 9 turns back to pavement, you simply cruise back into Cañon City on the section of the Red Canyon Road described on pages 32-33.



# RED CANYON ROAD RIDE

A local favorite, this out-and-back ride travels from town and takes riders to the outskirts of Cañon City, where you'll pass the iconic Red Canyon Park along with ranches, open space, and rustling cottonwood trees along Fourmile Creek. The road sees minimal traffic, but take extra care due to winding roads and gravel on the pavement in some places.



Photo: Ryan Graber

## ROUTE INFORMATION

**Start:** Begin downtown Cañon City and head north on 5th Street  
**Elevation gain/loss:** +/- 2,400 feet  
**Fitness effort:** Mild to moderate

**Difficulty:** Intermediate  
**Terrain:** Paved road  
**Seasons:** Year-round  
**Distance:** ~ 30 Miles, out-and-back

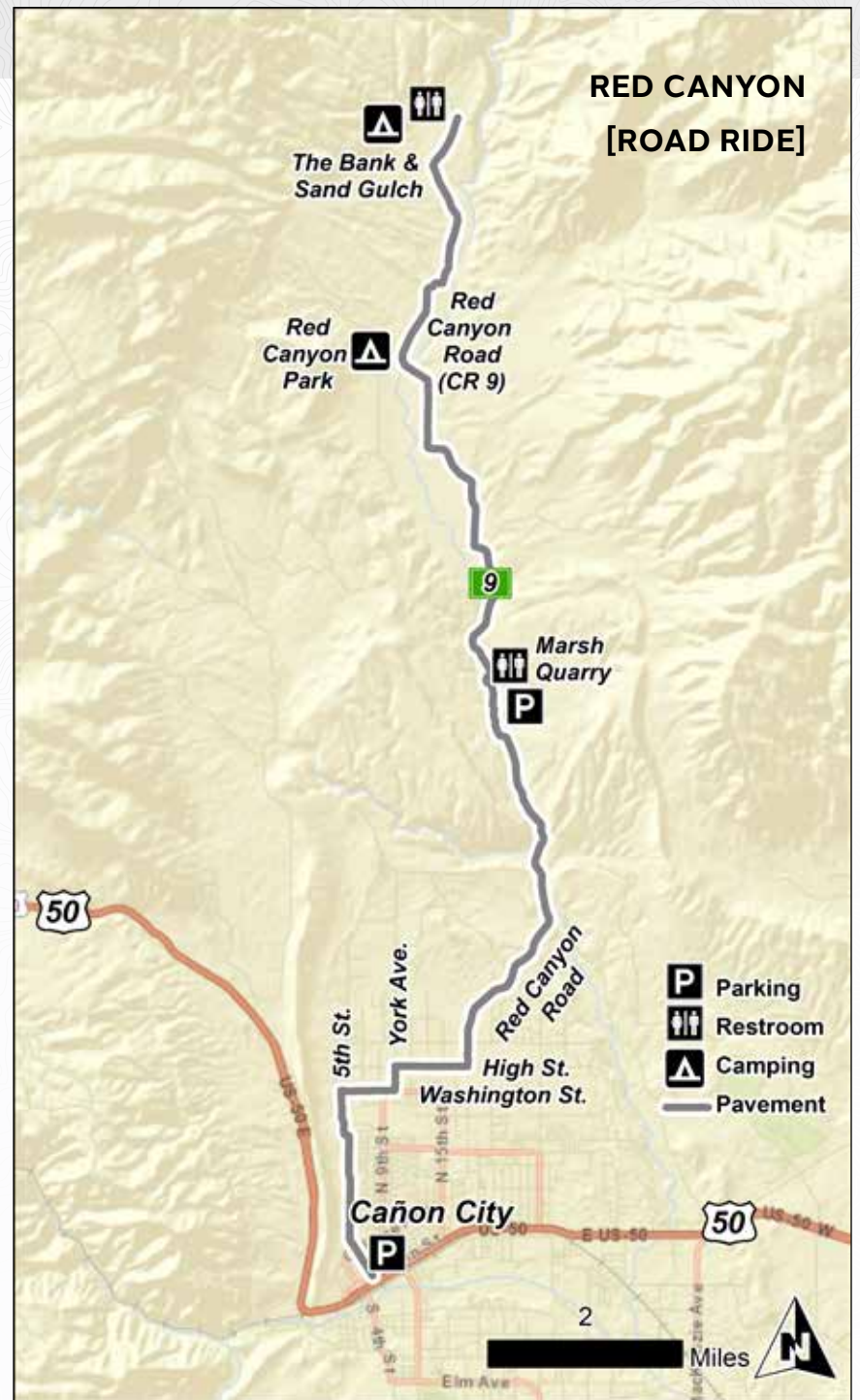
After working your way through town, you'll pass the sawmill and leave the city behind you. It's virtually impossible to get lost from this point, as the ride simply follows Red Canyon Road (CR 9) the whole distance. It's easy to set your pace to "cruise" and enjoy the scenery.

At mile 11.5 (at a 90 degree turn in the road) you'll see the historic one-room Garden Park Schoolhouse that was in use from 1895 until 1961. It has recently been listed on the Colorado Register of Historic Properties.

At mile 12.3 is the entrance to Red Canyon Park, a fun hiking area reminiscent of Garden of the Gods. See pages 26-27 for more information.

## GETTING THERE

From downtown, head north on 5th St. and make your way toward Red Canyon Road.



ROAD/CROSS CYCLING

# TEMPLE CANYON ROAD CROSS-RIDE

Temple Canyon Road offers rolling terrain on gravel and paved road, with incredible views and the option to descend on singletrack. Surrounded by both BLM and City of Cañon City lands, this scenic, low-trafficked out and back ride can be increased in length by varying your start or turnaround, depending on time and effort commitment.



## ROUTE INFORMATION

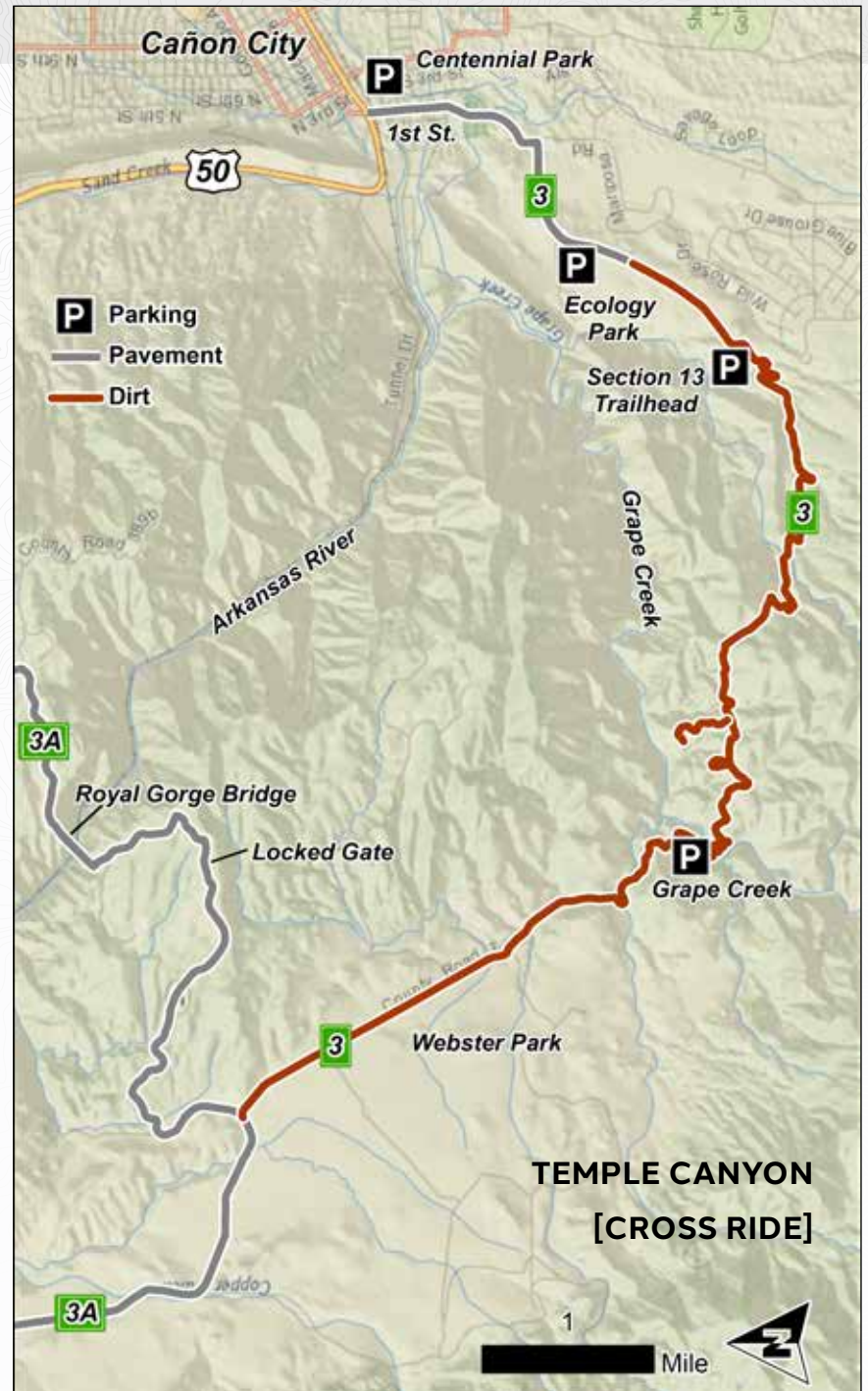
**Start:** Begin at the Ecology Park parking lot  
**Elevation gain/loss:** +/- 1,400 feet  
**Fitness effort:** Moderate  
**Difficulty:** Intermediate

**Terrain:** Paved and dirt road  
**Seasons:** Year-round  
**Distance:** 18-23 miles round-trip

Starting at the Ecology Park at an elevation of 5,607 feet, head south on Temple Canyon Road passing an old auto salvage yard. A gentle climb of just over a mile will bring you to Section 13 and Redemption trailhead. Continue past the trailhead as you descend and climb short sections of the Temple Canyon. At 2.9 miles you will pass the Hard Time trailhead and drop slightly before climbing the last .6 miles to the top of the canyon. Upon reaching the top the road drops for a nice descent. At 5 miles you pass an old quarry and, shortly after, a series of seven turns and switchbacks with the road passing a vault toilet and a bridge crossing Grape Creek. Continue pedaling as the road gradually climbs where at mile 7 you will enter Webster Park. In another 2.3 miles you will meet the paved County road 3A, the utility road for the Royal Gorge Bridge. Total mileage at 9.3 with 1,493 ft of ascent and 1,010 ft of descent. If you crave more mileage, the Royal Gorge Bridge & Park's south gate is 2.3 miles away, but you will have to endure a short 13% grade and climb 500 feet to reach it. Note that while paved the narrow road has deteriorated over the last several years and has pot holes and loose pavement. It may have utility truck traffic accessing the South Entrance and you must stop and turn around at the gate. To access the Royal Gorge Park and Bridge you must use the north entrance off of Highway 50 CR3A. Bicycle traffic is welcome from the north entrance with paid admission.

## GETTING THERE

From downtown, head south on 1st street for 1 mile. Then turn right onto Temple Canyon Rd. and park in the Ecology Park parking lot on the right.



ROAD/CROSS CYCLING

# HARDSCRABBLE LOOP

Though only 95 miles, this scenic loop is the locals' century test piece. You certainly won't feel shorted, however, as multiple steep grade sections will leave your legs burning. Luckily, the scenery and views are well worth the effort.



Historic Beckwith Ranch / CO-69 / Westcliffe

## TRAIL INFORMATION

**Start:** Begin downtown  
**Elevation gain/loss:** +/- 6,375 feet  
**Fitness effort:** Strenuous  
**Difficulty:** Intermediate

**Terrain:** Paved road  
**Seasons:** Year-round  
**Distance:** ~ 95 mile loop

The Strava segment starts at Highway 50 and 9th Street in the heart of Cañon City. Head south on 9th Street/Highway 115. After a warm up climb you will wander your way southeast about 8 miles to Florence. At the traffic light on the far east end of Main Street (the 3rd traffic light), turn right (south) onto Highway 67. A steady rolling incline section makes its way about 12 miles south to the hamlet of Wetmore. At the "T" intersection turn right (west) onto Highway 96. Enjoy the next several of miles of relatively low incline climbing, because it's about to get real. Before too long you will realize that you are now climbing "Hardscrabble." Channel your inner "cannibal" because Hardscrabble is a soul sucker. The "end" of the climb is McKenzie Junction. Stay right here on Highway 96 and keep climbing, though not as steeply, for another 10 miles.

The view of the Sange De Cristo mountain range as you approach the summit is amazing. After cresting out at just over 9,000 feet you will cruise into the small town of Silver Cliff, followed shortly by Westcliffe. You are now at the halfway mark (a little short of ½ the mileage, a little past ½ the time) and there are a couple of convenience stores to stock up at.

After a quick refueling, head west through town to the Highway 69 intersection. Turn right (north) and roll out of town, headed generally downhill now to the north. After about 15 miles the downhill will get serious as you plummet into Texas Creek at the Highway 50 intersection (hours for the local convenience store vary). Turn right (east) on Highway 50 and head back toward Cañon City. Save energy for the climb up the back side of 8 Mile Hill (at mile 85), you're going to need it. Following the last 2.5 mile climb, it is generally flat across the top of 8 Mile and then all downhill back into Cañon City to complete the loop.

## GETTING THERE

From downtown, head south on 9th Street (also known as Highway 115) toward Florence.



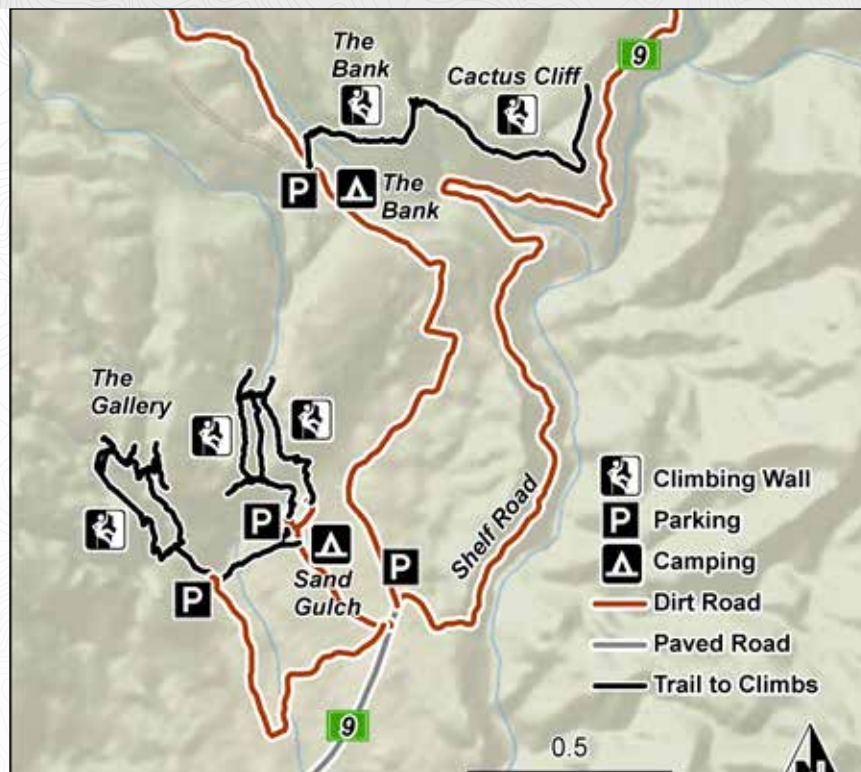
ROAD/CROSS CYCLING

# ROCK CLIMBING



Climber: Biyaya Laemmel  
Photo: Jerad Friedrichs

## NORTH CAÑON CLIMBING



HIKING

ROCK CLIMBING

### SHELF ROAD

One of Colorado's largest sport climbing destinations, Shelf Road offers a multitude of stellar rock climbs on some fascinating limestone cliffs. Shelf is great any time of year. With so many cliff options you can find ample sun or shade climbs at any of the major climbing areas. All areas have an approach of at least a 1/4 mile or more, so wear good hiking shoes. Also, due to higher temperatures in the summer, always bring a little more water than you think you will need. Watch out for rattlesnakes in the summer and always wear a helmet because even though many of the climbs get a lot of use and have been cleaned, loose rock exists.

Equipment suggestions: 14 quickdraws, a small amount of supplemental trad gear and a 60 meter rope should give you a chance at the majority of the climbs at Shelf Road, although a few pure trad lines exist. You will find climbs ranging from 5.5 to 5.13 in difficulty here, but it is predominately a 5.10-5.11 climbing area.

### SUGGESTED CLIMBS

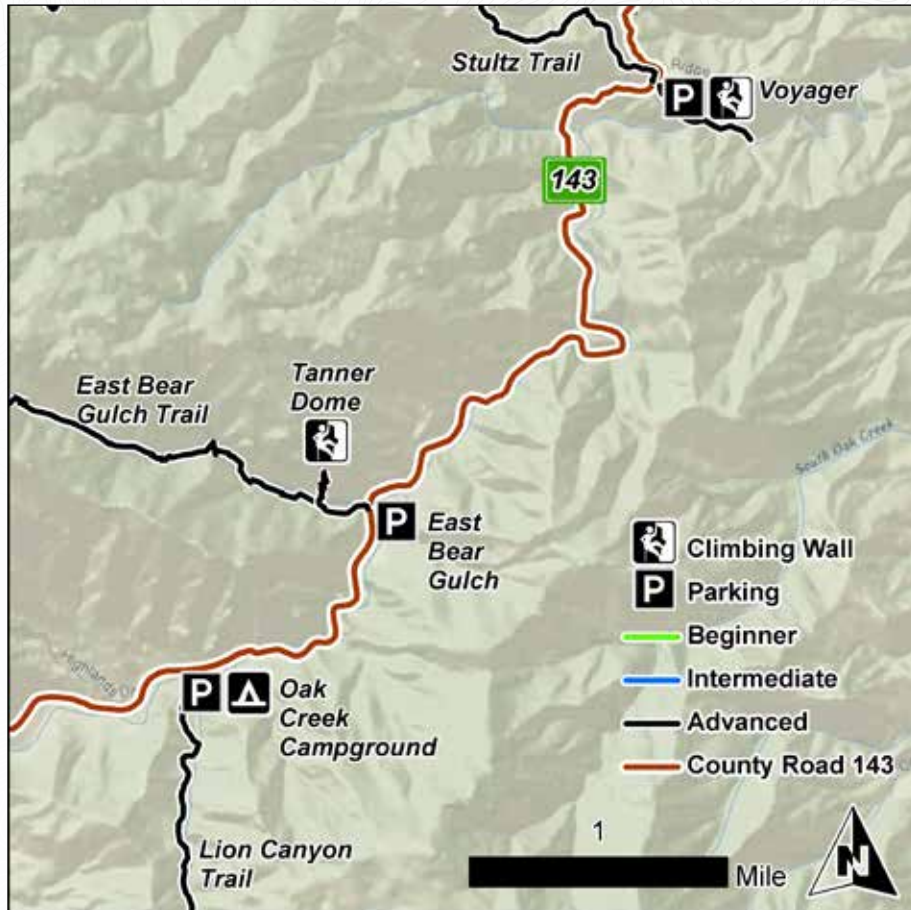
Crynoids Corner: 5.7 | Cactus Cliff  
First Blood: 5.8 | The Gallery  
Lumina Crack: 5.9 | Darkside

Facing page: Number 1 Super Guy,  
5.11a, The Banks

### FURTHER READING / GUIDES

Green, Stewart M. Rock Climbing Colorado, 2010.  
D'Antonio, Bob. Shelf Road Climbing, 2010.  
Robertson, Bob and Carrie. Back Side of the Bank: Lighter Side of Shelf, 2014.

# SOUTH CAÑON CLIMBING



## VOYAGER

This little Southern Colorado gem sits off to the east side of Oak Creek Grade Road (County Rd. 143). With a nice creek, trails, and well-bolted sport lines, this area is worth a look. Bring a 70-meter rope, 14 quickdraws, and some supplemental trad gear for mixed climbs!

## ROCK CLIMBING ETIQUETTE

1. Know the area.
2. Practice "Leave No Trace" principles.
3. Keep your noise level to a minimum.
4. Be considerate of other climbers.
5. Be patient.
6. Respect others' space.
7. Be respectful of the environment.
8. Be safe.

## TANNER DOME CRAGS

Approximately 11 miles south of Cañon City, Tanner Dome and adjacent crags are located on the west side of the scenic Oak Creek Grade. With over 80 routes on incredible granite, Tanner Dome is a wonderful area offering single and multi-pitch climbing to suit expert and beginner climbers' sport-climbing urges. Climbs range from 40 to over 200 feet. A 70 meter rope and 14 quickdraws will get you up the majority of the climbs and enable you to link some two-pitch climbs into one long granite cruise! Some beautiful mixed and trad lines also exist at the Tanner Dome area, so if you're willing to drag the trad rack up the hill, you'll be rewarded with some four-star routes to play on.

Make sure you wear your sturdy hiking boots for the rugged and steep access trail. Be sure to wear your helmet at the crag! Even some solid granite rock faces have areas of rockfall. Due to the remote location, it is best to bring enough food and water to keep your group happy, and to enjoy this forested wonderland in the Wet Mountain range.

*Please Note: The cliffs are closed to climbing April 1 - Aug. 1 for Peregrine Falcon habitat. Please respect the birds and find another climb location during this time.*

### SUGGESTED CLIMBS

Tanner Classic: 5.7  
Landscape Architect: 5.8  
Amp Right: 5.9

### FURTHER READING / GUIDES

Green, Stewart M. *Rock Climbing Colorado*, 2010.  
Mountain Project: Tanner Dome. [mountainproject.com/v/tanner-dome/105746629](http://mountainproject.com/v/tanner-dome/105746629)

## NEWLIN CREEK (SEE MAP ON PAGE 29)

Tucked in to the Wet Mountains behind the quaint little town of Florence, Newlin Creek offers a wonderful alpine setting with some intriguing granite boulders and spires peaking out from behind the dense forest. Not much has been written about this area yet but it has some good stone if you go hunting around with some gear and a sense of adventure. A 70 meter rope, 14 quickdraws, and a small trad rack for the mixed routes is a recipe for a good time! There are also a few nice boulder problems in the area for bouldering. Be aware of equestrian riders in the area. This spot is best enjoyed during the warmer months as it holds snow well in the valley during winter months, but be careful of snakes when it gets warmer.

### FURTHER READING / GUIDES

Breustle, Ben. 2003. *The Ripper: Climbing in Colorado's Wet Mountains*. Sharp End Publishing.  
Mountain Project: Newlin Creek. [mountainproject.com/v/newlin-creek/105744415](http://mountainproject.com/v/newlin-creek/105744415)

Robertson, Bob and Carrie. "The Sunny Side of Voyager", 2013.



## BOATING & FISHING

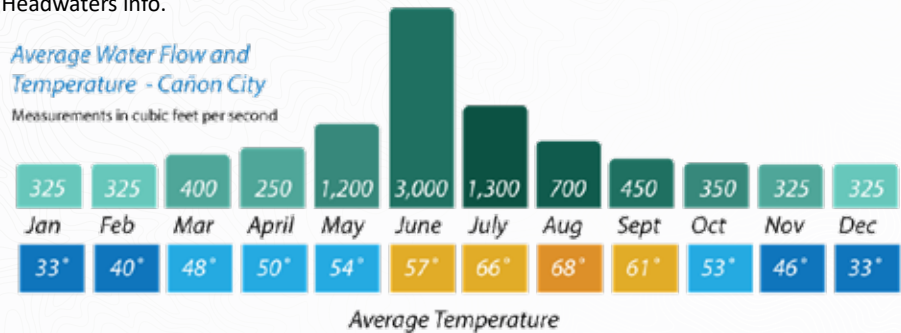
- If you want to scout a rapid, portage, or pull over for any reason, please be respectful of private property. (The railroad in both Bighorn Sheep Canyon and The Royal Gorge is private property. Do not use the tracks for scouting or access.)
- Always maintain a safe distance between boats. If you are a single boat and want to run with another group, always ask and alert them of your plans.
- Only pass other boats in calm sections of the river, not in rapids.
- Please pack out all trash, including food and human waste.
- Please check for fire bans before making campfires. Always use a fire pan.
- Park only in designated parking areas along the river, and always pay the applicable fees.
- Be courteous to anglers. Lower your noise level and paddle calmly as you pass.
- Take special care of the riparian environment: Do not bother wildlife or tread on plants.
- When inflating and deflating your rafts, please be considerate of other boaters: Do not block access points to the river or high-traffic loading/unloading zones.
- Please wash your boat or board after visiting other waterways to avoid transferring invasive species to our river and reservoirs.

### RIVER FLOWS

• Check for flow reports at: <http://waterdata.usgs.gov/co/nwis/rt> Click on the 'Colorado Statewide Streamflow Real-Time Table' link and scroll to the Arkansas Headwaters info.

Average Water Flow and Temperature - Cañon City

Measurements in cubic feet per second



Averages based on historic data from USGS measurements. River conditions can change at any time. Please consult current data to evaluate flows.

*Boating / floating is not recommended without proper training, equipment, and experience. Always wear flotation devices and check water conditions before putting on the river.*

### COLORADO LAW REQUIRES

- All occupants of inner tubes, air mattresses, and similar devices to wear a U.S. Coast Guard approved type I, III or V PFD (personal flotation device), i.e. a "life jacket".
- All persons under the age of 13 swimming in the Arkansas River within the AHRA must wear a U.S. Coast Guard approved type I, III or V PFD.
- All boats must be labeled with the owner's name and address, and phone number.

# PINNACLE ROCK TO CENTENNIAL PARK



Photo courtesy of Tenille Lenard

## RIVER FEATURES

**Seasons:** Higher water occurs in May-June. Water levels significantly decrease in late summer and slow to ~350 cfs by fall. Always check stream flows (available on the AHRA website) before rafting any section.  
**Distance:** ~20 miles

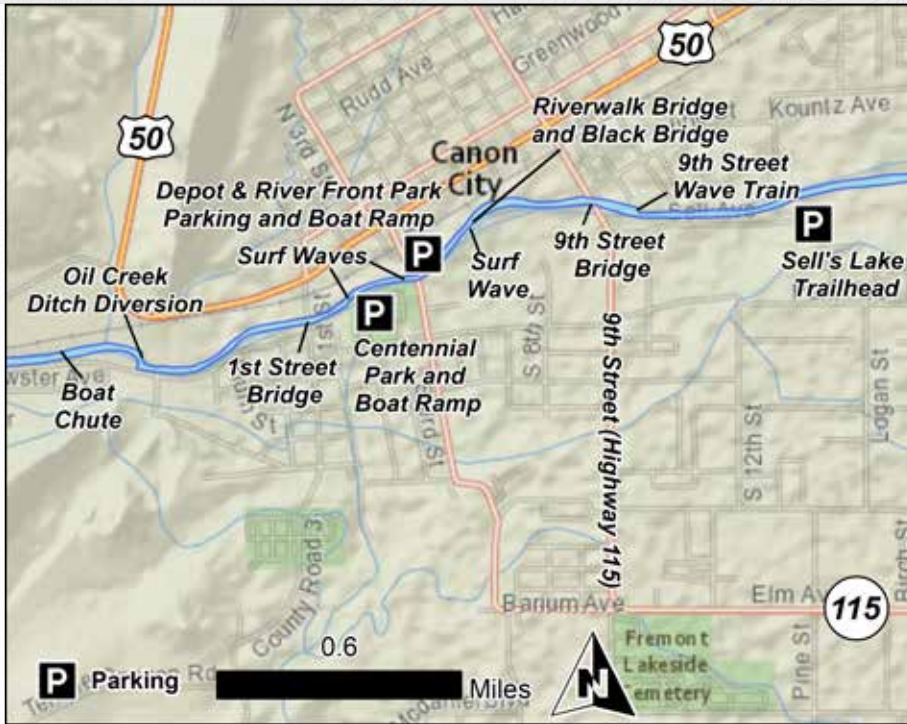
**Note:** Mornings and late afternoons are the best time to raft this stunning 20-mile stretch. Most outfitters put on around 8:30-9:00 a.m., but the busiest time is midday. Go early or late to beat the crowds, especially during summer weekends.

*This stretch of river is one of the most exhilarating and popular whitewater runs in Colorado. It includes both Bighorn Sheep Canyon (class II-III) and the Royal Gorge (class III-IV).*

- Pinnacle Rock:** A common put-in for Bighorn Sheep Canyon
- Three Rocks:** An impressive class III-IV rapid that should be scouted at higher flows.
- Five Points:** Wave to folks on the viewing deck! There are also restrooms and camping at this location, accessible from Highway 50.
- Spikebuck:** At higher water flows, avoid the large rock in the center of the river and the curling standing wave just after it. Spikebuck rock is left of center toward the bottom.
- Parkdale:** This is a great spot to eat lunch at the picnic tables. Restrooms located here.
- Sunshine Falls:** A difficult class IV rapid that bears scouting (via river right).
- Narrows:** Pass under the Bridge and Hanging Bridge; watch for rebar on river left.
- Boateater:** This fun rapid features a large rock/hole in the middle of the river.
- Pipeline:** Noted for the water delivery pipeline up above, this rapid signals the end of the notable rapids in the Gorge. Enjoy the float out!
- Centennial Park:** Take out on river-right, or on river-left for the River Station Boat Ramp.

## GETTING THERE

Access Pinnacle Rock River Access by traveling ~21 miles on Highway 50 west toward Salida. Turn right into the parking lot. Visit the kiosk to pay all applicable fees.



Play waves are a fun way to enjoy the river, learn to “surf,” and cool off in hot summer months. Waves can also get very crowded in the summer, and it’s polite to follow a few rules of etiquette to help everyone have a fun and enjoyable time.

## PLAY WAVE ETIQUETTE

- Take turns:** After your turn, join the back of “the lineup” to have another one.
- Keep your ride short:** When there is a line to ride the wave, please keep your ride to under 1 minute so others can have a chance.
- Alternate sides:** If riders are dropping into the wave from both sides of the river, please alternate whose turn it is.
- Yield to upstream traffic:** Before you drop in, check to make sure that no boats, kayaks, or other users are coming through.
- Always wear a PFD:** Arkansas Headwaters Recreation Area (AHRA) rules state:

*All occupants of inner tubes, air mattresses, and similar devices to wear a U.S. Coast Guard approved type I, III or V PFD (personal flotation device), i.e. a “life jacket”.*

*All persons under the age of 13 swimming in the Arkansas River within the AHRA must wear a U.S. Coast Guard approved type I, III or V PFD.*

**Watch out for each other:** Be kind to your fellow river user and always make sure that your actions are safe for others as well.

**For adults:** Please be aware of younger users and families who frequent the play wave. Be considerate and refrain from smoking in the area, especially during busy summer months.



This stretch of river will take you mostly across Class II waters. From Centennial Park, you’ll float through some of Cañon City’s Whitewater Kayak and Recreation Park’s river features and under the historic Black Bridge. Keep your eyes peeled for wildlife such as deer, falcons, egrets, and perhaps even a river otter or beaver.

## RIVER FEATURES

- Centennial Park Boat Ramp:** Park your car and get on the river.
- Centennial Park Wave:** Watch for a nice play wave. Can be big at higher flows. Timid boaters can try to sneak the wave just right of center.
- River Front Park:** Another boat ramp option to put in or take out (river-left).
- Black Bridge:** A second play wave is located just upstream of Black Bridge. Please give yourself plenty of room to navigate around the bridge pier.
- 9th Street Wave Train:** Located river-right, just follow the fun waves!

Remember that even this section of river requires a certified PFD (life jacket) if you are floating in ANY kind of raft or boat. Borrow one at the loaner station at either play wave. Please remember to return them!

**BETA TIP**

# SWIMMING IN THE RIVER



Centennial Park offers a wealth of opportunities to play in and around the river, but it's important to know the water level, your ability level, and rules. See posted signs at the park for current information.

The river runs highest in late May and June. During those times, it is usually unsafe for younger and inexperienced users to swim or use smaller river equipment like river boards, inner tubes, and SUPs.

## CHECK CONDITIONS AND THE WAVE CAM

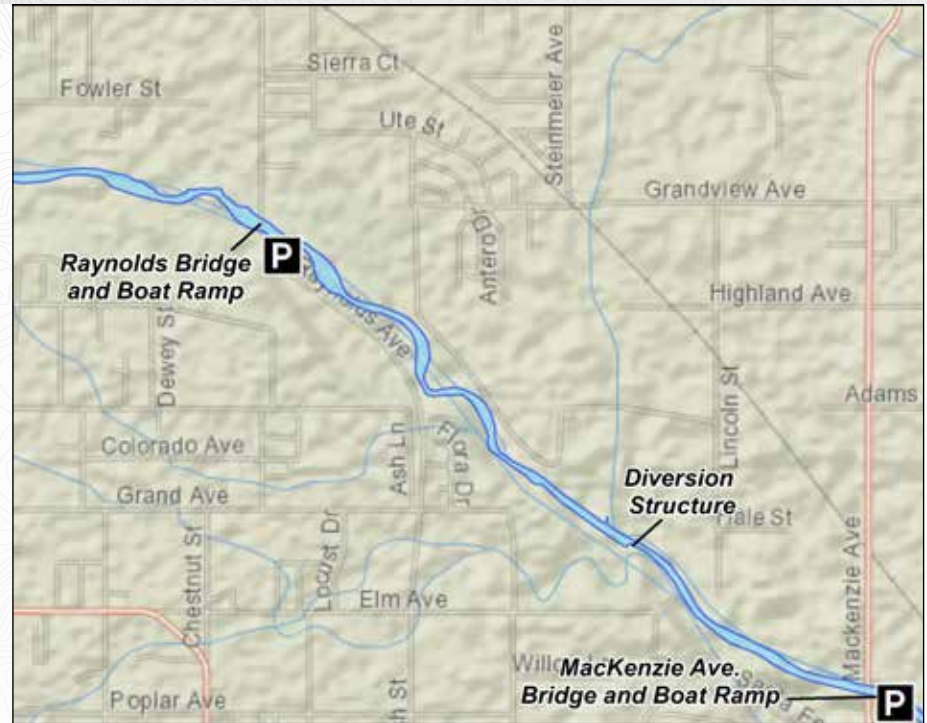
Check water levels, weather, and other conditions by viewing the City of Cañon City's live camera at: <https://www.canoncity.org/563/Play-Wave-Camera>



To learn more about river safety, local river events, or how you can volunteer, visit Royal Gorge RIO's website at: <https://www.royalgorgerio.org/>



# SELLS AVE. TO MACKENZIE TAKEOUT



## RIVER FEATURES

**9th Street onward:** This is a mild float, but watch for wood or branches in the river since high waters will often snag large cottonwood logs.

**Raynolds Bridge and Take-Out:** Be sure to give yourself plenty of room near the bridge piers! Be aware that the take-out comes immediately after the bridge on river-right.

**Diversion Structure:** Follow the signs and be sure to use the slot on river left.

**MacKenzie Take-Out:** At higher water flows, set up early to catch the ramp on river right.

**CAUTION:** There is an impassable and potentially dangerous dam downstream of the MacKenzie take-out. Portaging around this dam is extremely difficult, particularly at high water. Floating downstream of the MacKenzie take-out is not recommended.

BOATING/FISHING



# CAÑON CITY PARKS

Cañon City has a number of parks that are suitable for both children and pets. Please enjoy all parks responsibly and pick up any waste (including pet waste). Parks with river access are accessible via the road and the Riverwalk Trail.

|    |  | SPORTS FIELD | PICNIC AREA | PLAYGROUND | RESTROOMS | POTABLE WATER | RIVER ACCESS |
|----|--|--------------|-------------|------------|-----------|---------------|--------------|
| 1  | Denver & Rio Grande Park                       |              | ●           |            |           |               |              |
| 2  | River Front Park                               |              | ●           | ●          | ●         | ●             | ●            |
| 3  | Veterans Park                                  |              | ●           |            | ●         | ●             |              |
| 4  | Centennial Park / Whitewater Park / Tennis Ct. | ●            | ●           | ●          | ●         | ●             | ●            |
| 5  | John Griffin Regional Park                     |              | ●           |            | ●         |               | ●            |
| 6  | Rouse Park                                     | ●            | ●           | ●          | ●         | ●             |              |
| 7  | Dog Park and Archery Range                     |              | ●           |            |           |               | ●            |
| 8  | Magdalene Park                                 |              | ●           |            |           |               |              |
| 9  | Margaret Park                                  |              | ●           | ●          |           | ●             |              |
| 10 | Icabone Swimming Pool                          |              | ●           |            | ●         | ●             |              |
| 11 | Rudd Park / Tennis Courts                      |              | ●           | ●          | ●         | ●             |              |
| 12 | Harrison Park                                  | ●            | ●           | ●          | ●         | ●             |              |
| 13 | Mountain View Park and Skate Park              | ●            | ●           | ●          | ●         | ●             |              |
| 14 | Greydene Park                                  |              | ●           |            |           | ●             |              |



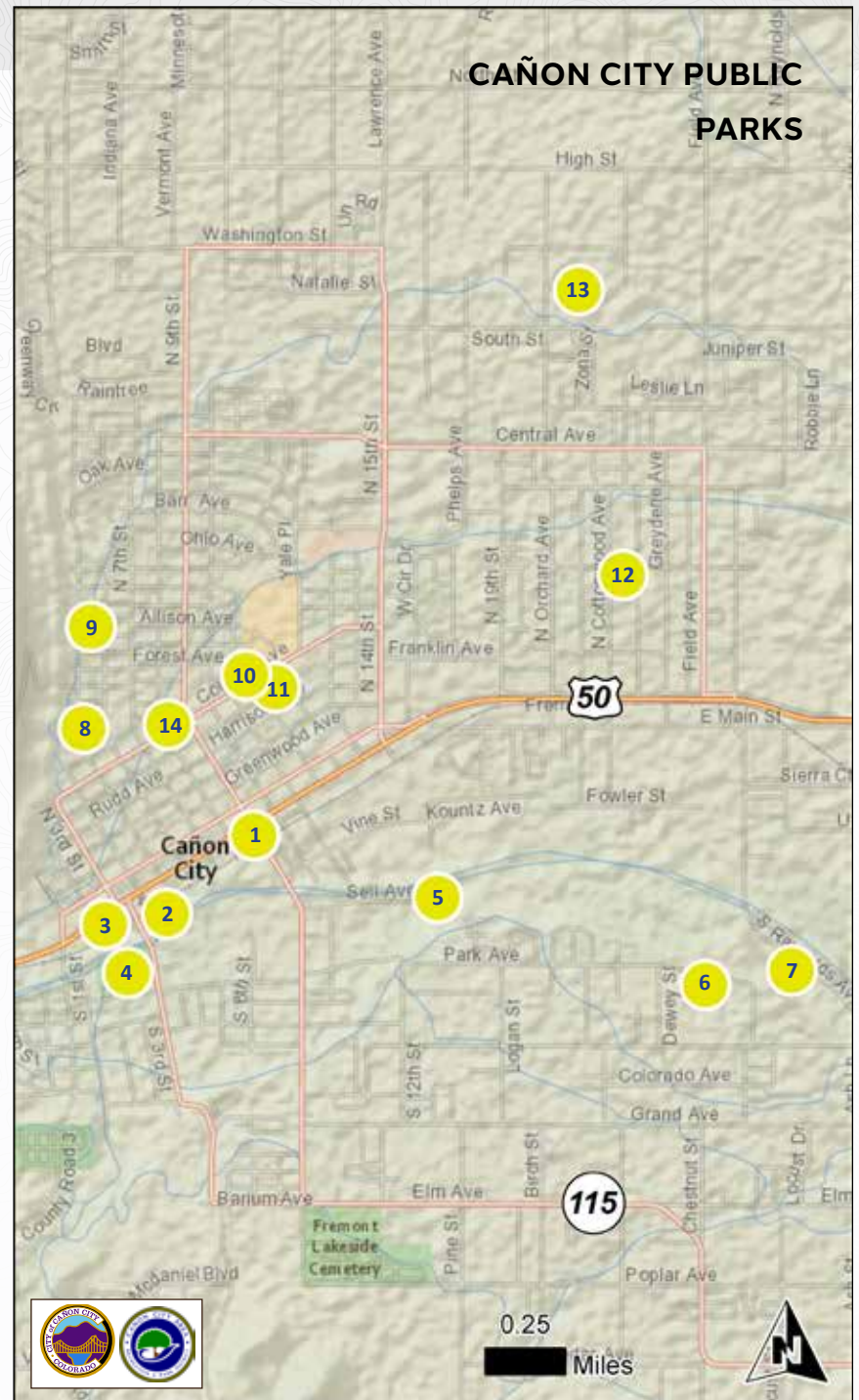
Splash pad at Centennial Park



Play structures at Centennial Park



Whitewater Kayak and Recreation Park at Centennial Park



# CAMPING

## PRIMITIVE CAMPING

*Spring, summer, and fall in the Banana Belt of Colorado are perfect for camping. See page 2 for average temperatures throughout the seasons.*

|                         | # OF SITES                             | PICNIC TABLES | FIRE RINGS | VAULT TOILETS | POTABLE WATER | TRAIL ACCESS | RIVER ACCESS | PRICE   |
|-------------------------|--|---------------|------------|---------------|---------------|--------------|--------------|---------|
| East Ridge Campground   | 20                                     | ●             | ●          | ●             |               | ●            |              | \$20    |
| Temple Canyon Park      | 8                                      | ●             | ●          | ●             |               | ●            |              | -       |
| Red Canyon Park         | 5                                      | ●             | ●          | ●             |               | ●            |              | -       |
| The Bank and Sand Gulch | 31                                     | ●             | ●          | ●             |               | ●            |              | \$20-40 |
| Oak Creek               | 12                                     | ●             | ●          |               |               | ●            |              | -       |
| Five Points             | 20                                     | ●             | ●          | ●             |               |              | ●            | \$28    |
| Phantom Canyon Road     | (Where space available. No amenities.) |               |            |               |               |              |              | -       |

## CAMPING GUIDELINES



*Please note: Dispersed camping does NOT mean that all open space is camping space. PLEASE preserve delicate plants and limit erosion by camping ONLY in approved, designated spots.*

- Build fires in approved fire pits.
- Pay all appropriate fees.
- Dispose of trash in or pack it out.
- Pitch tents only in approved areas.
- Be aware of wildlife: keep your campsite free of food and waste.

## COMMERCIAL CAMPING / RV SITES

*From dispersed tent sites to luxury glamping tents and cabins, the Royal Gorge Region has something for every itinerary.*

|  | # RV SITES | # CAMP SITES | WI-FI | PLAYGROUND | POOL | POTABLE WATER | CABINS | PRICE |
|--|------------|--------------|-------|------------|------|---------------|--------|-------|
| Mountain View RV Resort<br>mountainviewrvresort.net                | 40         | 0            | ●     | ●          |      | ●             | ●      | \$\$  |
| The Farmhouse RV<br>farmhouseroyalgorge.com                        | 89         | 37           |       | ●          | ●    | ●             | ●      | \$    |
| Royal Gorge KOA - 1% for Trails<br>koa.com/campgrounds/royal-gorge | 80         | 20           | ●     | ●          | ●    | ●             | ●      | \$    |
| Royal View Campground<br>royalviewcampground.com                   | 50         | 12           | ●     |            | ●    | ●             | ●      | \$\$  |



# FAMILY FUN & ACTIVITIES

# SUGGESTED ITINERARIES

The Royal Gorge region has a wealth of activities and local businesses to make your trip memorable. Please check the back of this guide to identify businesses that contribute to FAR and local trailbuilding efforts.

## FAMILY ITINERARY

### DAY 1

#### MORNING

- Stroll / bike along Tunnel Drive
- Play at Centennial Park splash pad and playground

#### LUNCH / AFTERNOON

- Take the train into the Royal Gorge
- Grab an ice cream cone
- Walk along Main Street

#### DINNER / EVENING

- Dinner in downtown Cañon City, or grab take-out and head to a local park
- Drive over Skyline Drive to see real dinosaur tracks
- Take a sunset hike in the Hogbacks
- Relax at your hotel or campsite

### DAY 2

#### MORNING

- Raft Bighorn Sheep Canyon or Upper Bighorn Sheep Canyon (Family-class)

#### LUNCH / AFTERNOON

- Lunch on 8-Mile Hill
- Visit a dinosaur or history museum (with dinosaur bones)

#### DINNER / EVENING

- Dinner in downtown Cañon City
- Walk along the Riverwalk Trail
- Search [royalgorgeregion.com](http://royalgorgeregion.com) for live music or festivals in the area

## ADVENTURE ITINERARY

### DAY 1

#### MORNING

- Grab breakfast in town
- Morning bike / hike at Oil Well Flats or South Cañon Trails

#### LUNCH / AFTERNOON

- Lunch in downtown Cañon City
- Stroll Main Street
- Stop in for a pint of Colorado brew

#### DINNER / EVENING

- Camp at a campground near the Royal Gorge
- Evening hike along the Royal Gorge Park trails
- Dine at the Royal Gorge Bridge
- Relax in your hammock

### DAY 2

#### MORNING

- Morning zipline tour or raft the Royal Gorge (Adventure-class)

#### LUNCH / AFTERNOON

- Lunch on 8-Mile Hill
- Afternoon bike ride or hike at the Royal Gorge Park trails

#### DINNER / EVENING

- Dinner in downtown Cañon City
- Wine tasting at a local winery
- Search [royalgorgeregion.com](http://royalgorgeregion.com) for live music or festivals in the area



Riders: Lilliana, Rosalie, and Anthony Johnson

# FOSSIL DISCOVERY

Please remember fossils are often not available for collecting unless you have permission by the landowner/land manager. These fossils are rare and cannot be replaced. If you find something or notice questionable activities, please report them to the respective land manager.

## MARSH / CLEVELAND QUARRY

Located in the BLM's Garden Park Fossil Area NNL (National Natural Landmark), Marsh Quarry has a .25-mile trail from the parking lot. Hike up to an overlook to see where Allosaurus, Ceratasaurus, Diplodocus, and Stegosaurus were first found in the late 1800s by local Marshall Felch. Cleveland Quarry area includes picnic tables and a vault toilet located along Fourmile Creek. Here in the 1950s, the Cleveland Museum of Natural History excavated "Happy the Haplocanthosaurus", which is still on display there today. For more information, visit: <https://canoncity.org/594/Garden-Park-Fossil-Area>.

## SKYLINE DRIVE

Right along the crest of City of Cañon City's famous and fun Skyline Drive lies a clear trackway of Ankylosaur footprint casts within the Dakota Hogback formation. Visible from the road, imagine traveling along the coastline of the ancient Western Interior Seaway 90 million years ago with this dinosaur! (See pages 14-15 for more information.)

## HOGBACKS OPEN SPACE AREA

At the Floral Trailhead as well as where the Greenhorn Trail meets Old Skyline Drive, two interpretive kiosks illustrate the area's geologic, fossil, and paleontological past. The Bridge Creek Trail, located near the Floral Ave. Trailhead, has additional kiosks.

## ROYAL GORGE MUSEUM AND HISTORY CENTER

The Royal Gorge Regional Museum & History Center: The history center has great geological and paleontological displays. Exhibits highlight the scientists who've worked on the fossils in our area. See museum details and hours on page 81.

## SOUTH CAÑON TRAILS

Hike along any one of South Cañon's trails and look for fossils of the ancient inland sea. Of particular note is Recycle, where you can see remnants of fossils and ancient seabed. Download a free copy of 'South Cañon Trails Geology Hike' at <https://royalgorgeregion.com/wp-content/uploads/Geology-Hike-1.pdf>.

## INDIAN SPRINGS TRACE FOSSIL NNL

(\$10 per person) This NNL is the best Ordovician trace fossil site in North America. See Fremont County's oldest fossils – from about 450 million years ago! Contact: Carly Thorson at the Indian Springs Campground (719-429-2206) for a tour of this protected fossil site.

## PUEBLO COMMUNITY COLLEGE

You'll find the Crossroads Through Time Heritage Park in front of the college. Take a .4-mile Geology Time Trail that introduces and explains both local and global geology and paleontology events.



5  
MILES

## HOGBACKS OPEN SPACE - GREENHORN

Start at the Floral Avenue trailhead and head out on Greenhorn. In just about .25 mile, you'll find some great interpretive kiosks with information about local geology and geography.

2  
MILES

## ROYAL GORGE PARK - POINT ALTA VISTA

This scenic trail starts at the public parking lot near the entrance to the Royal Gorge Ranch & Resort. Follow the signs to Point Alta Vista. Please stay on the trail and respect private property. Enjoy the view! (This is also a great bike ride.)

2  
MILES

## MARSH QUARRY

Park at the pullout on Red Canyon Road for this fun, moderate hike. Check out where the infamous Bone Wars took place, and look for fossils along the way. Reach the overlook (watch little ones) and read more at the kiosk. Play in Four Mile creek across the street afterwards.

1.5  
MILES

## SOUTH CAÑON - WATER GAP TO GRAPE CREEK

Start at the Ecology Park parking area and hike down the big hill to the Water Gap trail. Follow the dry creek bed to Grape Creek, where you'll find shade, rocks, and water nearly year-round to play in.

2  
MILES

## SOUTH CAÑON TRAILS - SAND HILL

From the Eagle Wing trailhead, head up Wagon Trail to Schepp Ridge and to the Sand Hill trail. It's a moderate hike with a steep climb just at the end. The views are wonderful!

3.2  
MILES

## RED CANYON PARK - LOOP TRAIL

A locals' favorite, the park will treat you to an unexpected red rock adventure! The region's newest trail is a fun loop with overlooks and beautiful views. Or, enjoy just walking up the main wash of Red Canyon. Check out the map on pages 26-27.

4.5  
MILES

## FREMONT PEAK

Are the kids ready for their first summit? Fremont Peak is a great place to start! Begin at the East Ridge Campground, take Cañon Vista to FAR Out, then either take the access road when it intersects or take Summit View to the start of the Fremont Peak trail. Recent addition to the last portion of this trail make it much more accessible.

Check out our website for more family-friendly adventures, including descriptions, distances, and COTrex routes!



1  
MILE

## RIVERWALK - EASY RIDE

Slightly older kids may enjoy this ride along the river, through three historic tunnels. There is a steep dropoff on one side, but the trail is wide and there are no technical elements. Tackle the big hill at the beginning and it's flat all the way to the end and back.

2  
MILES

## RIVERWALK - TUNNEL DRIVE

Start at Centennial Park and ride up to the Tunnel Drive trailhead. Going back to the park, it's an easy downhill grade. Ride the other direction to pass murals painted by kids, the train depot, and underneath a few bridges.

2.5  
MILES

## SOUTH CAÑON - MUTTON BUSTIN'

Begin at Eagle Wing trailhead for a nice easy ride up. You can take Wagon Trail for a straight shot up, and then take Mutton Bustin' down for a smooth, flowy, non-technical ride. As riders become more experienced, you can also incorporate Schepp Ridge and Recycle into the loop. Head to The Yard bike park for a few laps on the features, too!

3.5  
MILES

## HOGBACKS - GREENHORN TO GRANEROS

Begin at Floral Avenue trailhead and take Greenhorn to the end, where it meets up with Graneros. Pedaling the rolling hills of the Hogbacks is a great workout, but it's smooth and flowy all the way back on singletrack to the trailhead.

3.2  
MILES

## OIL WELL FLATS - FRACTURE

From the first parking lot, head out on Fracture for a family-friendly ride. You will encounter some rocks and mild technical spots, so make sure kids are ready to handle those elements.



## OIL WELL FLATS

- Fracture 1.7 mi ●
- Tectonic Shift 2.2 mi ■
- Path of Least Resistance 0.3 mi ●
- Anticline 2.9 mi ■
- Unconformity 2.5 mi ■
- Fire Canyon 0.9 mi ■
- Island in the Sky 3.0 mi ◆
- MOOve Over 1.4 mi ◆

## ROYAL GORGE TRAILS

- S'Mores 0.7 mi ●
- The Maze 1.6 mi ●
- Point Alta Vista 1.1 mi ●
- Dream Weaver 1.8 mi ■
- Darkside of the Moon 1.1 mi ■
- LeView 0.1 mi ■
- FAR Out 1.8 mi ■
- Philly Special 0.5 mi ■
- Canyon Rim 1.6 mi ■
- Cañon Vista 0.7 mi ■
- Summit Trail 1.2 mi ■
- Overlook Loop 1.2 mi ■
- Rock Hardy 0.2 mi ◆
- Twisted Cistern 1.6 mi ●
- Made in the Shade 3.3 mi ■
- One Track Mind 3.0 mi ◆
- Fremont Peak 0.5 mi ◆■

## SOUTH CAÑON TRAILS

- Sand Hill (foot only) 0.1 mi ■
- Schepp Ridge 1.3 mi ■
- Mutton Bustin' 1.2 mi ●
- Smooth Criminal (bike only) ~1.2 mi ■
- Water Gap (foot only) 0.2 mi ■
- ReCycle 1.1 mi ●
- Redemption 1.7 mi ■
- Hard Time 3.1 mi ◆
- The Shiv 0.2 mi ■
- Redemption 1.7 mi ■
- The Great Escape 1.8 mi ■
- Watchtower 2.5 mi ■
- LAMBA Chops 1.8 mi ■
- Hotshots 2.1 mi ■

## HOGBACKS OPEN SPACE

- Greenhorn 1.7 mi ●
- Graneros 1.8 mi ●
- Old Skyline Drive 0.5 mi ■
- Dakota Ridge 1.4 mi ◆
- Stone Quarry 1.1 mi ◆

## RED CANYON PARK

- Chipeta's Way ~4 mi ■
- Pioneer Pathway ~1.2 mi ●
- Guy's Gulch ~1 mi ●

Use the chart below to help you discover which system will offer you the appropriate skill level and amenities. Always read the complete trail descriptions (within this guide). Note: Weather can also effect trail, creek, and road conditions.

|                         | EASY HIKING / BIKING | ADVANCED HIKING / BIKING | AMAZING VIEWS | INTERPRETIVE MARKERS | STROLLER / WHEELCHAIR ACC. | WATER (FOR PLAYING IN) | RESTROOMS | LESS THAN 10-MINUTE DRIVE | ROUGH ACCESS ROAD | HISTORICAL SIGNIFICANCE |
|-------------------------|----------------------|--------------------------|---------------|----------------------|----------------------------|------------------------|-----------|---------------------------|-------------------|-------------------------|
| Arkansas Riverwalk      | ●                    |                          |               | ●                    | ●                          | ●                      | ●         | ●                         |                   | ●                       |
| Tunnel Drive            | ●                    |                          | ●             |                      | ●                          |                        | ●         | ●                         |                   | ●                       |
| Hogbacks Open Space     | ●                    | ●                        | ●             | ●                    | ●                          |                        |           | ●                         |                   | ●                       |
| South Cañon Trails      | ●                    | ●                        | ●             |                      |                            | ●                      |           | ●                         |                   | ●                       |
| Ecology Park            | ●                    |                          |               |                      | ●                          | ●                      |           | ●                         |                   | ●                       |
| Section 13              |                      | ●                        | ●             |                      |                            |                        |           | ●                         |                   |                         |
| Temple Canyon Park      |                      | ●                        | ●             |                      |                            | ●                      | ●         |                           | ●                 | ●                       |
| Oil Well Flats          |                      | ●                        | ●             |                      |                            |                        |           |                           | ●                 | ●                       |
| Red Canyon Park         | ●                    | ●                        | ●             |                      |                            |                        | ●         |                           | ●                 | ●                       |
| Royal Gorge Park Trails | ●                    | ●                        | ●             |                      |                            |                        | ●         |                           |                   | ●                       |
| Newlin Creek            |                      | ●                        | ●             |                      |                            |                        |           |                           | ●                 | ●                       |
| Pathfinder Park         | ●                    |                          |               |                      | ●                          | ●                      | ●         | ●                         |                   |                         |



Use a trail app like COTREX or Trailforks to help you discover where trailheads are and how difficult each trail is. Plan your trip accordingly.



## SUPPORT SEARCH AND RESCUE TEAMS

Fremont Search & Rescue is a volunteer organization dedicated to providing emergency aid to all who may need it. They give freely of their own time and money to acquire skills and conduct rescue operations. Please help them by:



1. Carrying the '10 Essentials' on all excursions
2. Being aware of your abilities and staying safe
3. Checking conditions and weather before you head out

You can support the work of Fremont SAR and other groups by purchasing a Colorado Outdoor Recreation Search and Rescue (CORSAR) card. For just \$5 per year or \$20 for five years, you can contribute to the Search and Rescue Fund, which reimburses teams for costs incurred in search and rescues activities across the State of Colorado.



The CORSAR card is not insurance and does not reimburse individuals nor does it pay for medical transport. <https://cpw.state.co.us/backcountry-search-and-rescue-program>



## OBSERVE ALL FIRE BANS

It is important to note that fire bans may change depending on the governing agency of the land you're camping on. Know if you are on City, County, BLM, or USFS land when you camp.

### STAGE 1 RESTRICTIONS

Campfires must be in a developed site (such as a campground or picnic area) in a permanent fire pit. No charcoal grills.



#### Fire Bans for Individual Counties in Colorado

<https://www.colorado.gov/pacific/dfpc/fire-restriction-information>

#### Bureau of Land Management (BLM) Rocky Mountain Region Fire Ban Information

<https://www.blm.gov/programs/fire/fire-restrictions>

#### United States Forest Service (USFS) Rocky Mountain Region Fire Ban Information

<https://www.fs.usda.gov/detail/r2/recreation/?cid=stelprdb5370444>

### STAGE 2 /3 RESTRICTIONS / RED FLAG DAY

NO WOOD OR CHARCOAL BURNING FIRES.

Exception: Stoves or grills that use liquid or gas and include a shut-off valve.



Each and every ride, run, or hike offers an opportunity to be a trail steward. You can help keep trails free of debris, clear of rocks, and free from long-term damage by assisting in the following areas. Thank you for maintaining our public trails and parks!

## TRAIL CARE



Everyone can be a trail monitor and / or contribute to everyday trail maintenance.

- If you see branches, weeds, or loose rocks on the trail, stop to throw them aside.
- Do not engage in unauthorized trail modifications, including removing or altering features.
- Extensive trail issues can be reported to: [trails@joinFAR.org](mailto:trails@joinFAR.org).
- Stick to the established trails and avoid creating harmful 'social trails.'

## MONITOR CONDITIONS



After rain or snow storms, trails need time to dry out. Leaving footprints, hoofprints, or tire tracks on trails creates places where water and mud collect, leading to longer-term damage and poor surface conditions.

- Check [joinFAR.org/trails](http://joinFAR.org/trails) for updates.
- Don't use muddy trails.
- Adhere to all trail use guidelines.

## PACK OUT ALL TRASH AND WASTE

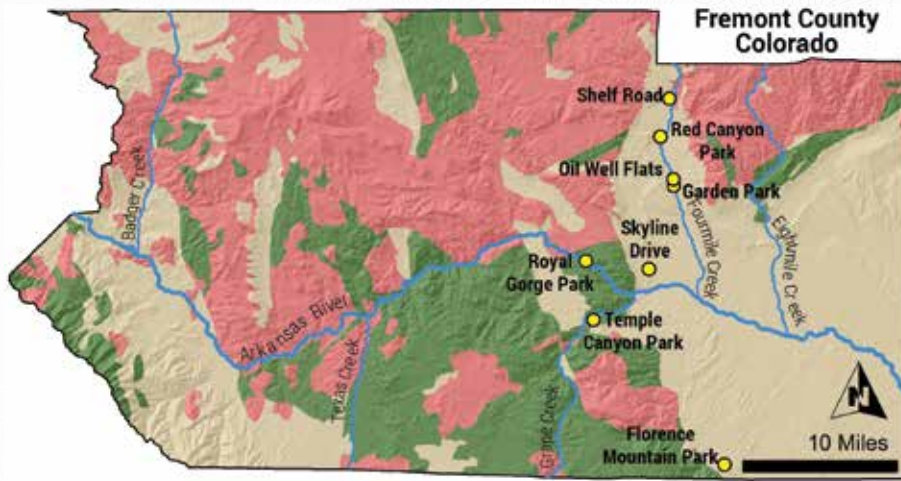


### PACK IT IN, PACK IT OUT.

Please remember that waste of any kind - pet and human - is a blight on our trails. Use waste bags and dispose of waste in proper receptacles (not on the side of trails, please).

Plan to use restrooms before you head out to hike or bike. For emergencies, please carry (and use) a waste disposal bag or bury your waste at least 6" deep.

The geologic story of Fremont County and most of Colorado begins 1.7 billion years ago. The oldest rocks, visible in some places in Fremont County, are metamorphic rocks created during the formation of long-gone mountain ranges. With their characteristic wavy black, pink, and white appearance, they give the walls of the Royal Gorge their iconic look. These rocks were then uplifted to create the Ancestral Rocky Mountains 300 million years ago. As the mountains eroded, the pebbles, cobbles, and sands created the Fountain Formation, the picturesque rocks that make up Red Canyon Park. About 155 million years ago, the famed dinosaurs of Garden Park roamed the floodplains of a Jurassic forest. During the Cretaceous Period, sea levels rose and the Western Interior Seaway flooded the central United States. The footprints along Skyline Drive represent Ankylosaurs walking along the shore of this sea and the Hogbacks Open Space shows signs of marine life as the water became deeper. Near the end of the Cretaceous, the sea receded as the present day Rocky Mountains rose. This uplift bent and broke the rock layers of the Front Range, exposing the layers of history for geologists to study.



Map outlining the most common types of rock in Fremont County.

## TYPES OF ROCKS



Igneous rocks are formed either deep inside the Earth as magma slowly cools or when magma is ejected from a volcano and cools very quickly. Granite can be found all over the Royal Gorge region.

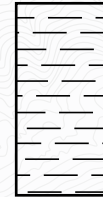


Metamorphic rocks are formed when other rocks have been heated and squeezed so much that they turn into a new type of rock. You can find examples of this at the Royal Gorge Park, where entire portions of the canyon walls have stripes or 'striations.'

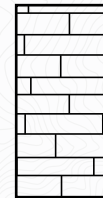


Sedimentary rocks are created when broken bits of other rocks, like sand, are pressed together until they become solid. This is where fossils are often found! There are some great examples of sandstone on Old Skyline Drive in the Hogbacks.

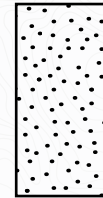
Geologists call the chart below a "stratigraphic column." It shows the different layers of rock, also known as the stratigraphy, in a specific area. In Cañon City, mountain building has bent these layers, exposing them in different places.



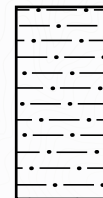
**Shale** is made up of many thin layers of tiny pieces of mud and clay. The thin layers and small grains mean that it formed in a deep lake or ocean, far from shore.



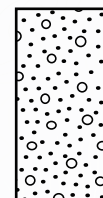
**Limestone** creates large cliffs because it is very resistant to erosion. These cliffs were once deep in the ocean; if you look closely, you may find fossilized shells and corals.



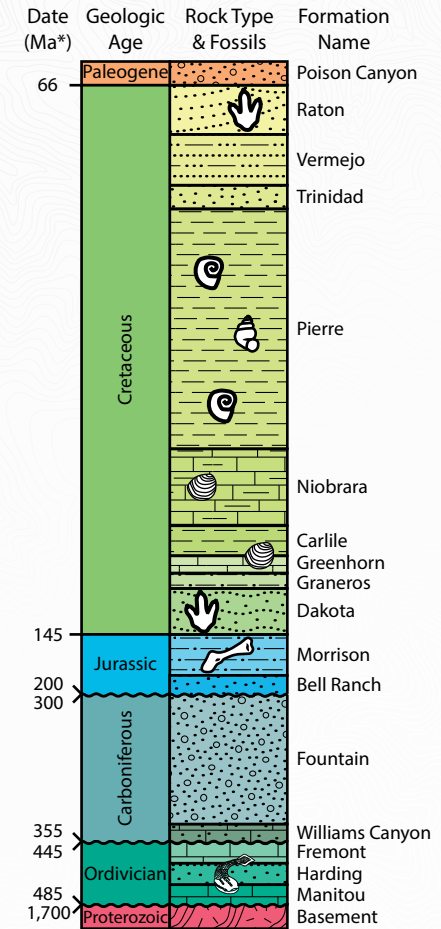
**Sandstone** is easy to identify because it looks and feels sandy. Most sandstones start as either beaches or riverbeds.



**Mudstone** is very similar to sandstone but the grains are much smaller. When a stream floods, it spreads mud across its floodplains.



**Conglomerate** is a mix of many different sizes of sand, pebbles, and gravel. In order to move large pebbles and gravel, you need a strong river.



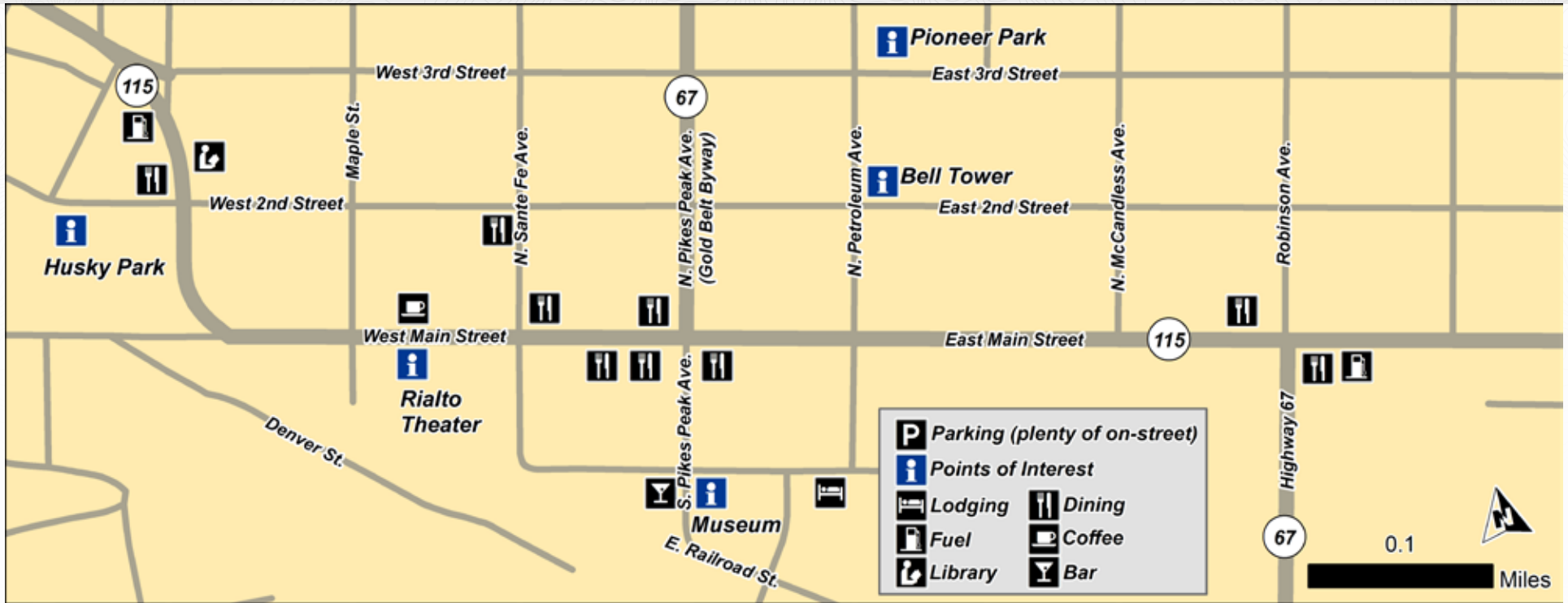
\*Ma stands for Mega-annums, or millions of years; Chart is not to scale; Source: Evanoff 1996



**Gneiss** (pronounced 'nice') is a metamorphic rock; an existing rock was buried so deep that very high temperature and pressure nearly melted it, creating wavy patterns.



# DOWNTOWN FLORENCE



Historic and quaint Florence is the ‘Antique Capital of Colorado’, and it delivers on its promise. Remnants of the town’s rich mining history are evident at every corner: You’ll find century-old buildings, murals, and scenic winding back roads. In the lively downtown area, you can spend hours browsing the unique and varied shops, including art galleries, antique stores, and restaurants. Check [finditinflorence.com](http://finditinflorence.com) for a calendar of events.

*The Florence Farmers’ Market is held every Thursday from 8:00 am - 1:00 pm, June through October in Pioneer Park. Enjoy local produce, handmade goods, and free entertainment!*

Pathfinder Park is located between Cañon City and the town of Florence on Hwy. 115. It offers a relaxing path that runs adjacent to the Arkansas River, a pavilion, sports fields, a playground, a fishing pond, and restroom facilities.



*The Florence Merchants Car Show*



*Pathfinder Park*

# DOWNTOWN CAÑON CITY



Before or after you head for the great outdoors, consider checking out downtown Cañon City. Historic Main Street, parks, and the Arkansas River all come together here. You'll have the opportunity to discover shops, public art displays, and eateries to suit a wide array of tastes. First Fridays on Main Street are sure to delight you and your family. With art gallery receptions and live music during the summer months, there's something for everyone!

Centennial Park is just a short walk from downtown, and is the site of many spring / summer events, such as car shows, the annual Blossom Festival in May, the Royal Gorge Whitewater Festival in July, and more!

*The Cañon City Farmers' Market is held every Tuesday from 8:00 am - 1:00 pm, June through October. Shop for local produce, products, and handcrafted goods!*





## WHERE TO GO FROM HERE

## SALIDA (1 HR. DRIVE)

Follow the river to beautiful Salida, just 1.25 hours from the Royal Gorge Region. You'll find ample opportunities to bike, hike, fish, and boat in this artistic mountain town. Enjoy trails that leave directly from downtown, or head out to Methodist Mountain for additional fun.

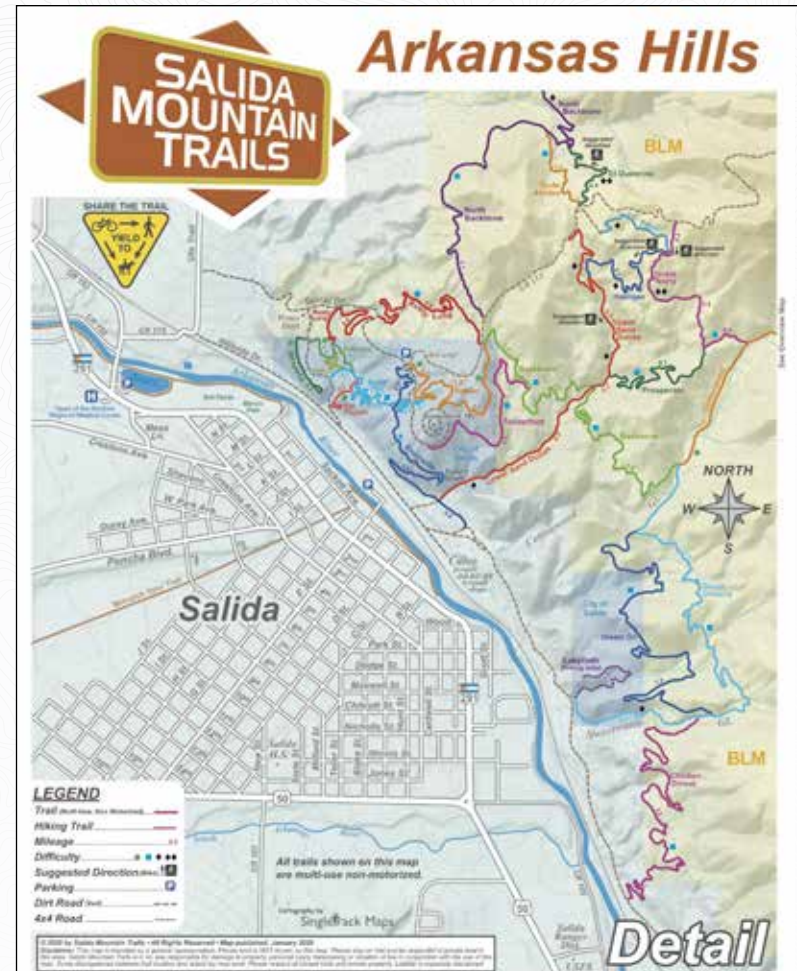


Photo by Scott Anderson

Salida Mountain Trails is an organization committed to building and maintaining sustainable, non-motorized, multi-user trails on public lands adjoining the city of Salida. We also have a core commitment to maintain and sustain all the trails around Salida – those we have built as well as those that have already been established.

[salidamountaintrails.org](http://salidamountaintrails.org)

Photo by Scott Anderson

# BUENA VISTA (1.5 HR. DRIVE)

Located upstream along the Arkansas River, Buena Vista offers a wealth of trail systems, sub-alpine hiking and biking, and glorious views of the Collegiate Peaks. Stop downtown to peruse their quaint downtown business district and also the new pump track.



Photo by Scott Anderson

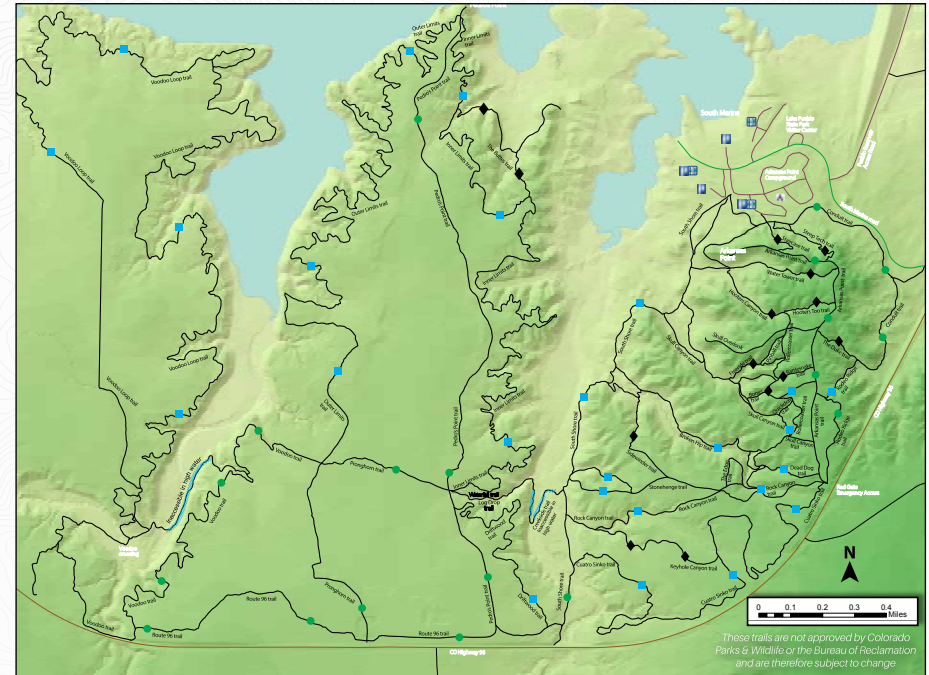
The Buena Vista Singletrack Coalition is a non-profit trail advocacy organization committed to collaborating with agencies, businesses, and locals in order to build, maintain, and steward sustainable trails for muscle-powered users. We promote responsible recreational trail use in the greater Buena Vista, Colorado area.



[bvsingletrack.com](http://bvsingletrack.com)

# PUEBLO (45 MIN. DRIVE)

Lake Pueblo Trails will take you high above the buttes surrounding the reservoir and into several challenging side canyons. With camping and boating options nearby, the trail system is a fantastic option all year, but especially during shoulder seasons.



Southern Colorado Trail Builders is a volunteer-run 501(c)(3) nonprofit. Your donations support trail advocacy, maps, maintenance, education and outreach. Donate or volunteer today.



[lakepueblotrails.org](http://lakepueblotrails.org)

# ULTRA-MARATHON CONTRIBUTORS



## ROYAL GORGE ROUTE RAILROAD

1 block south of Hwy 50 & 3rd St. | (719) 276-4000 | [royalgorgeroute.com](http://royalgorgeroute.com)

Experience America's most spectacular rail journey with great service, delicious food, and incredible scenery. First Class, Coach, Club, and Vista Dome services.



## ROYAL GORGE KOA

559 County Rd. 3A | (719) 275-6116 | [royalgorgekoa.com](http://royalgorgekoa.com)

Spend a night under the stars in the shadow of the Wet Mountains at the Royal Gorge KOA. The campground features the Fun Country Amusement Park.



## ECHO CANYON RIVER EXPEDITIONS

45000 West US Hwy. 50 | (800) 755-3246 | [raftecho.com](http://raftecho.com)

Since 1978 Echo Canyon has offered half-, full- and multi-day whitewater rafting. They feature packages, convenient luxury accommodations, and dining.



## PIZZA MADNESS

509 Main St. | (719) 276-3088 | [mypizzamadness.com](http://mypizzamadness.com)

Go where the locals go for delicious pizza, salads, subs, and more! Beer on tap and a fun family atmosphere, too! Kids will enjoy playing arcade games.



## CARLA BRADY WITH COMING HOME REALTY GROUP/REAL

729 Main St. | (719) 792-1111 | [ComingHomeRealtyPros.com](http://ComingHomeRealtyPros.com)

Mission: To kindly match people to their perfect properties by authentically listening and learning from clients while offering skills, knowledge, and positivity.



## THE BEAN PEDALER

412 Main Street | (719) 285-8169 | [thebeanpedaler.com](http://thebeanpedaler.com)

Craft coffee, cool atmosphere, and delightful baristas make this the go-to spot for adventurers. Serving great post-hike or -ride food and beer.



## GATZKE HOMES AT HOMESMART PREFERRED REALTY

501 Royal Gorge Blvd. #1 | (719) 458-9559 | [GatzkeHomes.com](http://GatzkeHomes.com)

Real estate sales and marketing services in Cañon City, Florence, Penrose, Pueblo West, and the Royal Gorge Region. Explore the best Colorado has to offer!



## DESERT RIVER FAMILY MEDICINE

712 Macon Ave. | 719-285-8890 | [desertrivermed.com](http://desertrivermed.com)

Dr. Ryan Shumon Rahman, MD is a Board Certified Family Medicine Physician ready to serve the thriving Fremont County community with exceptional care.



## FREMONT MITIGATION SERVICES

Cañon City | 719-429-0791

Call Fremont Mitigation for assistance with fire mitigation services, tree and shrub removal, and landscaping needs. Locally owned and operated.



## WHITWATER ROOFTOP SOCIAL | 302 Royal Gorge Blvd. | (719)

269-7238 | [RooftopSocial.com](http://RooftopSocial.com)

Enjoy great food, cold beer, and views from the roof at Cañon City's newest restaurant overlooking the Arkansas River. Open through the year.



## CAÑON CONSULTING | (775) 296-2022 | [canonconsulting-rec.com](http://canonconsulting-rec.com)

Kalem Lenard | [kalem@canonconsulting-rec.com](mailto:kalem@canonconsulting-rec.com)

Outdoor-recreation consulting firm delivering recreation management - trail system master planning, camping and river-use strategies, and NEPA compliance.

# MARATHON CONTRIBUTORS



## AUSTIN AUTOMOTIVE

2625 E. Main St. | (719) 275-5055 | [austinautomotive.com](http://austinautomotive.com)

There is no better place for honest, dependable, quality automotive service for your vehicle. Stop in for diagnostics, maintenance, and more!



## REAMS PALACE DRUG

601 Main St. | (719) 275-3375 | [reamspalacedrug.com](http://reamspalacedrug.com)

Conveniently located downtown, Reams Palace Drug, Inc. has been serving the Royal Gorge Region since 1880. They offer prescriptions and delivery.



## WHITWATER BAR & GRILL

45045 West US Hwy. 50 | (719) 275-7238 | [royalgorgerafting.net](http://royalgorgerafting.net)

Delicious food and a fun, casual atmosphere round out this local favorite. Dive just minutes from the famous Royal Gorge Bridge and Royal Gorge Trails.



## ROYAL GORGE RAFTING

45045 West US Hwy. 50 | (719) 275-7238 | [royalgorgerafting.net](http://royalgorgerafting.net)

Whitewater at its best! Raft the Royal Gorge or Bighorn Sheep Canyon with RGR and see some world-class rapids! Trips range from mild to wild.



## ROYAL GORGE ZIPLINE TOURS

302 Royal Gorge Blvd. | (719) 275-9477 | [royalgorgeziplinetours.com](http://royalgorgeziplinetours.com)

Add more adrenaline to your vacation by booking a thrilling zipline tour through the beautiful Arkansas River Valley. Suitable for all skill levels.



## CAÑON CITY MUGS

1520 Royal Gorge Blvd. | (719) 276-5348 | [canoncitymugs.com](http://canoncitymugs.com)

With a full-service restaurant, sports bar, espresso cafe, and outdoor patio, MUGS is a local favorite. Stop in for a coffee to go or stay to watch the game.



## FOURMILE VETERINARY CLINIC

401 Lincoln Ave. | (719) 275-6318 | [fourmilevet.com](http://fourmilevet.com)

Your pets deserve the best care. Trust them to Fourmile - serving Fremont County for 40 years!

Interested in being a FAR sponsor or member? Check out our website at [joinFAR.org](http://joinFAR.org). Each year, we post opportunities for sponsorship, including our End Of Year report. Check it out!

BETA  
TIP

# HALF-MARATHON CONTRIBUTORS



GROUND2AIR PRODUCTIONS | (719) 371-1440 | [ground2airproductions.com](http://ground2airproductions.com)  
*From the ground to sky, Ground2Air Productions produces high-quality images and video. Also available: senior photos, event photos, photo booth rental, and more!*



3 ROCKS ENGINEERING | 425 Main St., Suite 19 | (719) 430-5333 | [3rocksendeering.com](http://3rocksendeering.com) | *Providing local civil engineering expertise to the Royal Gorge Region by creating custom solutions for the community they care for.*



NAPA AUTO GROUP | *Supporting our community by supporting non-profit work in Fremont County.*



BEST WESTERN | 110 Latigo Lane | (719) 275-2400 | Enjoy discounted event lodging at our sponsor Best Western - details at [JoinFAR.org](http://JoinFAR.org)



RIVER CANON SOLUTIONS | (719) 429-8079 | [info.rcfremont@gmail.com](mailto:info.rcfremont@gmail.com) | *We offer exceptionally clean and well-maintained long term (12 month lease) rental properties. Call for availability and terms.*



LITTLE CANYON INN | 44058 W. US Hwy. 50 | 719-285-3934  
[littlecanyoninn.com](http://littlecanyoninn.com) | *Vintage motel. Modern interiors. Unique stay. Enjoy beautiful Western vistas and a comfortable room in this quaint boutique motel.*



DAILY RECORD | 1202 Royal Gorge Blvd. | (719) 275-7565 | [canoncitydailyrecord.com](http://canoncitydailyrecord.com) | *Local reporters, local news, and a weekly calendar will keep you informed.*



CAFE BELAY | 1707 FREMONT DR. | (719) 215-9420  
[cafebelay.com](http://cafebelay.com) | *Before you head out to run, ride, climb, or explore, stop in for a cup of coffee, tea, a piece of delicious chia bread, a salad, or a breakfast burrito!*



THE WINERY AT HOLY CROSS ABBEY | 3011 E. Hwy. 50 | (719) 276-5191 | [abbeywinery.com](http://abbeywinery.com) | *The winery's historic and scenic setting will make your wine-tasting experience one to never forget! Come in for a tasting soon.*



THOM LEDOUX LAW | 901 Main St. | (719) 377-8317 | [thomledouxlaw.com](http://thomledouxlaw.com) | *Thom LeDoux has over 20 years as a prosecutor and is now using that experience in criminal defense in Southern Colorado. Call for information.*

TERRA FIRMA TRAILS | (719) 275-7565 | [terrafirmatrails.com](http://terrafirmatrails.com)  
*Local, knowledgeable trailbuilder with PTBA membership. Great trails in great places! Available for hire for private property projects.*



ROYAL GORGE BRIDGE & PARK | 4218 County Rd. 3A | (888) 333-5597 | [royalgorgebridge.com](http://royalgorgebridge.com) | *Experience 360° of jaw-dropping rides and miles of natural Colorado beauty. Enjoy North America's highest bridge, or experience the NEW Via Ferrata.*



ROYAL GORGE REGION | (800) 704-6743 | [royalgorgeregion.com](http://royalgorgeregion.com) | Visit the Royal Gorge Region - where you can ditch the ordinary and explore the extraordinary! Your adventure starts here.



CAÑON CITY SHOPPER | (719) 276-7600 | [canoncityshopper.net](http://canoncityshopper.net) | Get the most effective and economical advertising reach for your budget with the Shopper - distributed county-wide and online.

## 10K LEVEL CONTRIBUTORS



CAÑON CITY FITNESS | 701 S. 9th St. | (719) 429-7342 | [canonfitness.com](http://canonfitness.com) | *Join the community fitness center that will help you be the best version of yourself! Start your fitness goals with a skilled trainer and a supportive community.*



THE HIVE IN DOWNTOWN CAÑON CITY: A COWORKING COMMUNITY  
 729 Main St. | (719) 792-1234 | [TheHiveCanonCity.com](http://TheHiveCanonCity.com) | *Cañon City's cutting-edge coworking space for digital nomads and entrepreneurs. WiFi, printing, and private work spaces available.*



HAAS TECHNICAL WRITING | 1408 Chestnut St. | (219) 306-1419 | *We specialize in making communication clear and impactful. Our skilled team of technical writers works as your trusted guide, turning complex ideas into concise, engaging content.*



ZIA RIDES | [ziarides.com](http://ziarides.com) | *Add the Royal Gorge 6 & 12 to your race calendar, held on our beautiful Royal Gorge Trails. Join in on other races across the southwest, too! ZIA Rides is a 1% for trails sponsor.*



**FRONTIER FEEDS | 3275 East US Hwy. 50 | (719) 275-7557 | Give your pet the best products at great prices! Quality feeds and supplies with knowledgeable and friendly service.**



RIVER STATION GEAR | 125 S. 5th St.. | [riverstationgear.com](http://riverstationgear.com) | *Locally-made, high-quality river gear for all types of river enthusiasts. Come in and browse a wide selection of gear, equipment rentals, art, and gifts.*



PHIL'S TREE AND CHIPPING SERVICE | 1725 Willow St. | (719) 276-0628 | *Chipping and tree trimming service. Local and serving our community.*



JANICE GRAHAM AND ASSOC. | 831 Royal Gorge Blvd., Suite 215 | (719) 275-1100 | *Contact Janice Graham, CPA, for reliable and experienced tax, accounting, and business advisory services.*



## 5K CONTRIBUTORS



CAÑON YOGA | 504 Main St. | canonyoga.com | *Our space is your haven for tranquility, connection, and self-awareness, tailored for every body.*



WISEMAN MOVEMENT | wisemanmovement.com | (303) 549-8799 | *Providing functional movement training for life's adventures and longevity since 2023.*



CAÑON SIGNATURE MORTGAGE | 715 Main St. | (719) 275-2999  
CanonSignatureMortgage.com | *Dave and Lynda Lambert offer USDA Financing, VA loans, FHA loans, and conventional loans. Stop in and say hello!*



NEW ROOTS FARM | newrootsfarmllc.com | newrootsfarmllc@gmail.com  
*Providing fresh, sustainably grown fruits and vegetables to support local communities and healthy eating. Contact them about CSAs, farm tours, and where to find their produce.*

## PARTNERS



FREMONT360 | P.O. Box 1762 | (719) 345-8812 | fremont360.com  
*Stay up-to-date on all of the happenings in Fremont County!*



FREMONT SEARCH AND RESCUE | fremontsar.com  
*Volunteer organization dispatched to provide emergency services.*



ROYAL GORGE RIO | royalgorgerio.org  
*Local non-profit dedicated to the health and vitality of our lower Arkansas River.*

## THANK YOU

*Thank you to the following people for assisting with or contributing to the Adventure Guide:*

Brian LeDoux  
Mike "millz" Millard  
Vicki Meier and Tillman  
Melissa Smeins  
Mark Peacock  
Biyaya Laemmel

Jerad Friedrichs  
Justin and Ian Ensinger  
Scott and Nancy Anderson  
Michelle Johnson  
Lilliana Johnson  
Rosalie Johnson

Anthony Johnson  
Danyll Donnell  
Derrick Donnell  
Adam Davidson  
Genevive Walker  
Ryan Graber

## 1% FOR TRAILS



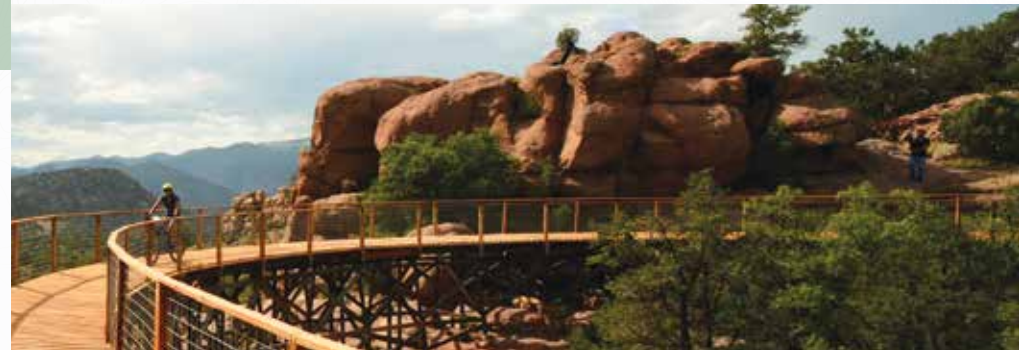
The Royal Gorge Region already has a series of great hiking, biking, and walking trails. Increasingly, Cañon City's residents and out-of-town visitors are exhibiting a greater interest in outdoor recreation. Visitors to the area bring much-needed business to local restaurants, hotels, and attractions. We would like to harness everyone's spending power to create a cooperative relationship - customer dollars create great trails, and great trails bring everyone back for more!

Businesses around the region elect to add a 1% donation onto their customer's bill. Contributions are then distributed directly to FAR. All monies collected from these 1% donations are collectively used to fund trails and outdoor recreation in the Royal Gorge Region. Our 1% For Trails initiative funds all things trails and outdoor recreation: matching funds for grants, grant writing, trail building, trail design, trail maintenance, and more. Concurrently, FAR will continue to contribute to local efforts to market to and encourage users of singletrack trails to visit our beautiful city!

Due to the generous 1% support since late April 2015, here's some of what we've spent our 1% funds on so far:

- Trail maintenance on over 60+ miles of trail in the region
- Additional trails in South Cañon Trail System, including Watchtower and Wrath of Grapes
- Rock work on Dakota Ridge and construction of Stone Quarry in the Hogbacks;
- Matching grand funds for maintenance of trails in Oil Well Flats;
- Over 20 miles of trail in the Royal Gorge Park;
- Addition of the flow trail - Smooth Criminal - the the Ecology Park / South Cañon Trails

If you are a business owner and are interested in becoming a participant in FAR's 1% for Trails Initiative, please contact [Coordinator@joinFAR.org](mailto:Coordinator@joinFAR.org).



# LOCAL RESOURCES

## MEDICAL

St. Thomas More Hospital  
1338 Phay Avenue, Cañon City  
(719) 285-2000

**In an emergency situation, please dial 911.**

Centura Health Urgent Care Cañon City  
3245 E. Hwy. 50, Suite E, Cañon City  
(719) 285-2888  
Monday-Friday, 8 a.m.-7 p.m.  
Saturday-Sunday, 8 a.m.-3 p.m.

## SAFETY

Cañon City Police Department  
161 Justice Center Road, Cañon City, CO  
(719) 276-5600  
Monday-Friday, 8 a.m. - 5 p.m.

Fremont County Sheriff's Office  
100 Justice Center Rd., Cañon City  
(719) 276-5555  
Monday-Friday, 7:30 a.m.-4:00 p.m.  
(Closed from 12:30 p.m.-1:00 p.m.)  
Friday, 7:30 a.m.-1:00 p.m.

## VISITOR INFO / RESOURCES

Royal Gorge Chamber Alliance &  
Regional Visitor's Center  
816 Royal Gorge Blvd., Cañon City, CO  
<http://www.royalgorgechamberalliance.org>

Cañon City Public Library  
516 Macon Avenue, Cañon City, CO  
(719) 269-9020  
Monday-Saturday, 10 a.m.-6 p.m.  
FREE WiFi

Royal Gorge History Museum  
612 Royal Gorge Blvd, (Hwy 50), Cañon City  
Wednesday-Saturday, 10 a.m. - 4 p.m.  
(719) 269-9036

Cañonland Hikers and Walkers  
(719) 276-0974  
Facebook: Canonland Hikers and Walkers

Camp Furry Paws  
115 N. Diamond Ave., Cañon City, CO  
(719) 371-1563

## LAND MANAGEMENT

Arkansas Headwaters Recreation Area  
307 Sackett Avenue, Salida, CO  
(719) 539-7289

City of Cañon City Parks  
221 Griffin Avenue, Cañon City, CO  
(719) 269-9028

Bureau of Land Management  
Royal Gorge Field Office  
3028 East Main St., Cañon City  
(719) 269-8599  
Tip Line: 833-215-1917  
RMDTIPLINE@blm.gov

Cañon City Area Recreation District  
575 Ash Street, Cañon City, CO  
(719) 275-1578  
Monday-Friday, 8 a.m. - 5 p.m.



# 18 hole course, **FREE** to play!

## Located on the PCC Fremont Campus, 51320 W. Hwy. 50 in Cañon City.



For more information,  
scan the QR code or email  
[Michael.Maffucci@pueblocc.edu](mailto:Michael.Maffucci@pueblocc.edu).

